

# TEK RETIREE NEWS

Tektronix  
Retiree  
Volunteer  
Program



Web Page: [www.tekretirees.org](http://www.tekretirees.org)

A Newsletter for and by Tek Retirees

FEBRUARY 2005



## Cliff Moulton

Cliff Moulton was a former Tektronix engineer and key employee, from 1951 to 1962, and 1981 to 1991. He is currently owner of Funding Northwest, working with homeowners to overcome home mortgage foreclosure problems.

Cliff serves as board member for The Good Neighbor Center, a local homeless shelter with 36 beds in Tigard. Stated purpose is "The Good Neighbor Center is dedicated to providing safe temporary housing and supportive services to empower individuals and families to be self-sufficient." The Good Neighbor Center serves those who need a hand up, not a hand out, with a current staff of nine full-time employees. The center has operated for about five years, turning around many lives. It has no food budget. All of the food is donated. You can visit: [www.goodneighborcenter.org](http://www.goodneighborcenter.org) to access weekly needs and find opportunities to volunteer.

You probably know voters removed the county safety levy support November 2, 2004. As a result, GNC expects to suffer about \$200,000 lost annual support for stabilizing these homeless here in Washington County. GNC depends greatly upon the community for labor and materials. If you are interested in supporting this group the contacts are (503) 443-6084 Volunteer Coordinator Cece Horn x224 or Executive Director Sydney Sherwood x228. The GNC address is 11130 SW Greenburg Road, Tigard OR 97223.

## 55-Alive Class Scheduled

To register for a 55-Alive class (two-4 hour sessions), taught by Bruce Hollister, call the TRVP office at 503-627-4056. The fee is \$10.00 per person. Taking the class may qualify you for a discount on your car insurance.

Date: April 14 & 15, 2005

Time: 8:00 a.m. to 12:00

Location: Building 58, Conf. Rm. 1NH13

## Tektronix Creates an Author

By: Shirley Patterson-Wallace



The only thing I had on my mind that late afternoon in the fall of 1980, was a hamburger. I had no idea that while I was ravenously awaiting my turn to order, the conversation between two individuals in front of me would alter my life.

My stomach rumbled, and the fear of emitting a hungry growl threatened as the smells of the grill reached my nostrils. However, I couldn't help but overhear the matter being discussed by the two individuals ahead of me. Soon my hunger was subdued as I took in the subject being chatted about—job openings at a company called Tektronix. Within a week of hearing about available employment with Tek, I was hired.

Through the years, my job title changed due to promotions, but it wasn't until I was tossed into the job as Building 08's newsletter writer/editor that my life took a new direction.

Evidently, the position had been vacated rather quickly, and without much warning. It was not a matter of talent that landed me the job, but more realistically my close proximity to a computer. The thought of others reading what I had to say made my already shattered nerves horror-struck. Nonetheless, I took a deep breath after surmising my predicament and decided to make the best of it.

Building 08 was spinning off from Tektronix and would soon be known as TriQuest. Those individuals who decided to stay with Tek would have to seek new jobs within the original organization. One of my first assignments was to interview such an individual in order to get their feelings on the transition. As it turned out, the editor of the corporate office in Beaverton read my article and gave me such praise that I took a second look at my goals in life. A new gift had been discovered within me—writing! And to think, it all started with the urge for a hamburger!

So, what have I been doing since I left Tektronix in 1990? I have been spending a great deal of time with grandchildren and working on several writing projects, one of which is now a published novel based on a true story. If you are interested, you can go to [barnes&noble.com](http://barnes&noble.com) and look for "Milla's Villa." A second novel for young adults called "The Forkyped," is due out this spring.

When I look back, I realize what a truly wonderful company Tektronix was to me. It not only granted me many opportunities to grow in the world of business but also as an individual. I shall be forever grateful.

## Annual Spring Tek Reunion

By: Marge Livermore

The annual Tek spring gathering is scheduled to take place:

**May 21, 2005**

**Time: 3:00 p.m. to ????**

**at the**

**Beaverton Elks**

**3500 SW 104th**

**Beaverton, Oregon 97005**

Again we will be requesting a \$2 donation to help defray some of the expense. Many people donate not only their time, and money but a great deal of energy so we can all enjoy meeting up with old friends and making new ones. If you are in touch with other former Tekers, pass the word. If there are any questions, please email me at: [marge.livermore@gte.net](mailto:marge.livermore@gte.net)

## **Grand Circle Tour – 2004 EGYPT**

*By Judy Watkins*

### **What surprised me most?**

The first thing we noticed when arriving in Cairo and throughout the country was the military presence. In 1997 terrorists caused the death of 70 tourists at the temple of Queen Hatshepsut near Luxor and the tourist trade dropped off significantly. The government made the decision to do whatever was necessary to bring tourism back to Egypt and they set up a security system in that effort.

Armed guards and/or soldiers now guard all the national monuments and ruins as well as every exit and entrance of schools, churches and hotels. The grounds around the hotels are secured with guards and cars are not allowed to park within the barriers. When entering a hotel people must pass through security checkpoints similar to our airports.

### **What was the weather like?**

October/November was the perfect time for Egypt travel. The weather was warm (mid to high 80's in Cairo, low-90's in the south) but never hot or unbearable.

### **What were the best and worst things about the trip?**

The best was the unbelievable history that was everywhere. I was in awe the entire trip. The vendors in Egypt were the worst of anyplace I have been. It is probably the culture difference that I had trouble dealing with.

### **Facts about Egypt**

Cairo is the capital of Egypt and has an estimated population of 17M. It has a rich history and over the past 1,000 years it has been ruled by the Greek, Persian, Roman, Arabian, French and British Empires. Cairo is a maddening city with its incessant crowds, noise and pollution. Traffic is worse than any I have ever witnessed. Cars don't even slow down for stop signs, lights or pedestrians. At night head lights are not used because they believe they will burn down the car's battery.

In Egypt life expectancy for men is 57 while women live to be 61. 50% of the population is under age 16. Workers are made to retire at 60 years old and receive a pension equal to 75% of their working income. Today only 10% of the population pays the taxes that support this large country (due to age, income levels, hidden income, etc.) Children in public schools go to class six days a week but sometimes only half-days because of the shortage of school buildings.

Many farm families don't go to school because they don't see the need since they will remain farmers for generation after generation. When England ruled Egypt they closed all the schools because they believed it was easier to control uneducated people, now education is free for kindergarten through college for boys and girls alike. The problem with this is there are many highly educated people who are unemployed. There is a need for more skilled trades like carpenters, plumbers and electricians.

The three main sources of income for Egypt are the Suez Canal, the liquid natural gas reserves and tourism, in that order.

### **What did we see?**

#### **Pyramids**

The pyramids in Giza are perhaps the most famous ancient monuments in the world. While I always imagined these monuments to be far out into the desert they are in fact right at the edge of town.

The Sphinx is located next to the pyramids and is carved from bedrock of the Giza plateau. It is believed that the Sphinx was commissioned by the 4<sup>th</sup> Dynasty King, Khafre (2558-2532 BCE) one of the sons of Khufu (Cheops) who is recognized as the builder of the Great Pyramid. The Sphinx lines up with the Pyramid of Khafre at the foot of its causeway.

#### **Valley of the Kings and Queens**

On the west bank at Luxor is one of the most important archaeological sites in the world. This is the location of the Valley of the Queens and the Valley of the Kings. The valleys are the burial place of pharaohs of the New Kingdom, 18<sup>th</sup>, 19<sup>th</sup>, and 20<sup>th</sup> Dynasties. To date more than 62 tombs have been identified.

#### **Temples**

Abu Simbel is located 180 miles south of Aswan on the southern border of Egypt and on the shore of Lake Nasser. It is one of the most intriguing monuments in Egypt. Ramses II built two temples at this site; both are built into the rock face. The main temple is dominated by four seated 66 ft. statues of Ramses, each seated on a throne and wearing the double crown of Upper and Lower Egypt. Through a hypostyle hall containing eight columns depicting Ramses II is an inner sanctuary with statues of Ra, Ramses II, Amun and Ptah seated against the far wall. Words can't begin to describe the inside and outside of these temples.

The Temple of Kom Ombo was built during the Greco-Roman period (332 BC - AD 395). This temple is very unusual because it was dedicated to two deities, each with their own

associated chambers and sanctuaries.

In Edfu the Temple of the Falcon God Horus is the best preserved example of Greco-Roman temples of Egypt and the second largest after Karnak.

The Temple of Abydos is on the west bank of the Nile, 90 miles north of Luxor and is linked to the earliest dynasties recorded. The temple dates to around 3150 BC.

The Temple of Hathor is located on the west bank of the Nile near Dendera. It was never finished but it is well preserved.

Karnak Temple is actually a complex of three main temples, smaller enclosed temples, and several outer temples. This vast complex was built and enlarged over a thirteen hundred year period. Karnak is the largest temple complex in the world covering more than 100 acres.

#### **Museums**

The Cairo Egyptian Museum opened its 107 halls to the public in 1902 and holds Egypt's greatest collection of Egyptian antiquities. On the first floor items are arranged to follow the history of Egypt and includes the famous slate palette of King Narmer (3200 B.C.) which is one of the first documents of Egyptian history. On the second floor the treasures from Tutankhamen's Tomb are found and the display includes chariots, gloves, jewelry, the famous gold mask the pharaoh was wearing, all four gilded shrines in order of decreasing size and much more. Tutankhamen remains in his tomb to this day. The museum also houses the Royal Mummy Room that houses eleven kings and queens including the most famous Ramses II (Warrior King and Son of Ra).

The Alexandria National Museum holds Egypt's largest collection of Greco-Roman art mostly from excavations around Alexandria. The artifacts reveal the mixture of ancient Egyptian, Greek and Roman elements and include two mummies.

#### **Churches**

In Cairo's oldest still inhabited neighborhood we visited several early churches including Egypt's oldest synagogue and its first mosque. Egypt has always been the center of religions and Judaism, Christianity and Islam have been freely practiced over the ages.

#### **Other**

In Aswan a new dam (High Dam) was started in 1960 and finished ten years later. It was financed with help of the Soviet

## Retiree Deaths

Date: Nov, Dec, & Jan, 2005

**Alexander, Mildred** – d. 10/6/2004

At Tek: 8/20/1973 to 7/11/1986

**Barber, Helen** – d. 12/8/2004

At Tek: 10/10/1966 to 1/27/1984

**Barker, Leah** – d. 11/7/2004

At Tek: 7/10/1958 to n/a

**Baska, Dorothy** – d. 12/1/2004

At Tek: 11/26/1956 to n/a

**Berg, Ludmilla** – d. 12/2/2004

At Tek: 10/27/1958 to 2/6/1981

**Billings, Keith** – d. 1/4/2001

At Tek: 2/9/1976 to 3/29/1991

**Brejcha, Carolyn** – d. 11/29/2004

At Tek: 1/21/1957 to 7/11/1986

**Brown, Marie** – d. 11/3/2004

At Tek: not available

**Bulmer, Craig** – d. 12/9/2004

At Tek: 8/15/1977 to 8/25/1996

**Burke, John** – d. 1/26/2002

At Tek: 4/16/1973 to 7/28/1992

**Clancy, Cecil** – d. 11/10/2004

At Tek: 2/9/1959 to n/a

**Delepine, Barbara** – d. 12/24/2004

At Tek: 6/28/1976 to n/a

**Drennan, Robert** – d. 8/16/2004

At Tek: 3/8/1982 to 7/31/2000

**Eastman, Jack** – d. 10/27/2004

At Tek: 7/28/1969 to 12/30/1983

**Edwards, H.** – d. 8/12/2000

At Tek: 7/26/1982 to 7/22/1983

**Green, L.** – d. 10/29/2004

At Tek: 3/16/1966 to 3/4/1994

**Harrell, La Verne** – d. 10/17/2004

At Tek: 8/28/1961 to 7/25/1986

**Harrell, Raymond** – d. 12/15/2004

At Tek: not available

**Harris, Verna** – d. 11/25/2004

At Tek: 7/19/1956 to 9/18/1981

**Helmcke, Darrell** – d. 11/1/2004

At Tek: 2/1/1960 to 2/26/1993

**Jahnsen, Eleanor** – d. 6/8/2004

At Tek: 1/9/1978 to 7/11/1986

**Jansen, Glenna** – d. 12/7/2004

At Tek: not available

**Johnson, Robert** – d. 10/15/2004

At Tek: 3/11/1963 to 3/30/1983

**Kelly, Bradford** – d. 11/28/2004

At Tek: 9/30/1977 to 9/17/1990

**Lacey, Donald** – d. 11/27/2004

At Tek: 4/2/1956 to 4/29/1983

**Mccord, William** – d. 12/5/2004

At Tek: not available

**Miller, Nancy** – d. 12/29/2004

At Tek: 9/10/1973 to 8/28/1992

**Robart, Douglas** – d. 11/7/2004

At Tek: 2/24/1960 to 11/15/1974

**Shine, Lorraine** – d. 9/4/2004

At Tek: 1/17/1977 to 3/25/1977

**Stevens, Jerome** – d. 12/17/2004

At Tek: 8/11/1977 to 3/27/1992

**Stuart, Roberg** – d. 10/3/2004

At Tek: 1/31/1966 to 5/18/1979

**Supalla, Clarence** – d. 10/19/2004

At Tek: 6/7/1960 to 4/29/1983

**Tanner, Lee** – d. 12/10/2004

At Tek: 4/7/1980 to 6/22/1990

**Trevino, Benito** – d. 1/6/2005

At Tek: 9/10/1973 to 8/6/1990

**Uphoff, Robert** – d. 12/27/2004

At Tek: 12/10/1979 to 4/19/1991

**Wright, Betty** – d. 12/23/2004

At Tek: 6/15/1972 to 5/4/1994

**Yarbrough, Donald** – d. 7/6/2004

At Tek: not available

Union who provided 400 technicians for the work. (The money was later paid back to Russia for political reasons.) The Aswan Dam created the world's largest man-made lake that runs 300 miles south into Sudan and covers 2,300 square miles. It is considered the greatest public works to be undertaken in Egypt since the pyramids.

### Egyptian Food

The Egyptian cuisine depends heavily on fresh ingredients such as herbs, garlic, lemon and vegetables. The most consumed component in the Egyptian diet is bread (Aish). Another favorite component of the diet is Fava beans, known for their nutritional value. The typical Egyptian menu will consist of soup, meat/chicken/or fish, vegetable stew, rice or pasta, salad and bread. Fruits are served for dessert. More elaborate desserts are served on special occasions.

*This is a condensed version of Judy's article. If you would like the full version contact Judy Watson at:*

*judywa@msn.com*

*There will also be pictures on the Web that we do not have room to publish in the newsletter. See at:*

*www.tekretirees.org.*

### Annual Potluck in the Park

Shutes Park

Hillsboro, OR

June 25, 2005

Time: 11:00 a.m.

Invite your friends and co-workers to join you in the park for a fun filled time. All ex-Tek employees, family and friends are invited to join in.

Bring a dish to share, your dinner service and drinks. For additional information call the TRVP office at 503-627-4056 or check the TRVP webpage at:

[www.tekretirees.org](http://www.tekretirees.org)

### Volunteer Recognition Coming Up

Date: April 23, 2005

Place: Bldg: 58 Cafeteria

Time: 12:00 to 3:00 p.m.

If you are a volunteer, or know of someone who is volunteering but not on our volunteer mail list please give us a call so we can invite them too. We can be reached at 503-627-4056.

Additional information will be mailed to volunteers soon.

### CANADA, Lake Louise

*by Victor Herman*

First I would like to express my gratitude for your sending me the Tek Retiree News, even though we are not living anymore in Portland. I would like also to give my regards to all my colleagues from building 38 (Beaverton Campus), with whom I worked almost 14 years. It was an interesting experience, for me and for my wife Lucia, who also worked for Tektronix. We came from Eastern Europe (Romania), without any knowledge about electronics, but received very good training, and after 3 years I became a component specialist.

We miss the retiree reunions at the Beaverton Elks and picnics at Shute Park. We also miss Portland, Oregon because it is a beautiful, modern and exciting city, which offers places to see and things to do. We lived in Portland for 25 years, and during these times we traveled a lot, visiting the western states.

The most beautiful trip in Canada was when we visited Banff and Jasper National Parks, situated in Alberta, in the heart of the Canadian Rockies. For two weeks we  
(See *Lake Louise* on page 4)

## Tek Retiree News

Editor: Louis Sowa Publisher: Peggy Jo Berg

### Editorial Staff

Dick Braniff • Judy Watkins • Millie Scott  
Jennie Lou Werlein • Ray Arnett

### TRVP Development Team

Warren Collier      Jess Gard  
Dick Duggan      Harry Tanielian  
Evelyn Marsh      Ed & Roz Srebnik

Tek Retiree Newsletter is published quarterly by the Tektronix Retiree Volunteer Program. Send all correspondence to Tek Retiree News, M/S 58-037, PO Box 500, Beaverton, OR 97077.

**Office Telephone: 503-627-4056**

**TRVP Email: [tek-retirees@exgate.tek.com](mailto:tek-retirees@exgate.tek.com)**

**Editors Cell Telephone: 503-320-0440**

**TRVP Web Page: [www.tekretirees.org](http://www.tekretirees.org)**

Tektronix Retiree Volunteer Program  
M/S 58-037, PO Box 500  
Beaverton, OR 97077-0001

Presorted  
Standard  
U.S. Postage  
PAID  
Beaverton, OR  
Permit No. 1

## Editorial

*By Louis Sowa*

Your editor has been a little overwhelmed with time constraints, consequently I am even a little more disorganized than usual. One item I lost is the name of the person who sent the Christmas Card and note mentioning plans to move to Roseville, MN. There was also a drawing that I would like to use. The name was not on the card and I accidentally misplaced the envelope. If you send your name again we would like to include your letter in the next issue even though it will be nearly summer.

I have a new office at home and maybe by next issue I will be fully moved in and more organized.

## Calendar

### Marconi's Cronies

Meet the 2nd Wednesday of each month:  
12:00 a.m.

at J.J.North's Buffet Restaurant  
Northeast Halsey at 105th  
Portland, OR

Contact: Jack Riley for details  
Phone: 503-235-5267

### CRT Luncheons

3rd Tuesday of each month at 11:30 AM  
at the Home Town Buffet located at  
13500 SW Pacific Highway in Tigard, OR

Contact: Jack Neff for details  
1301 East Fulton St., Apt. 241  
Newberg, OR 97132-1870  
Phone: 503-554-7440

## Lake Louise (Continued from page 3)

slept in our van, saving a lot of money, the hotels are very expensive. We planned to stay one month in Canada, but we cut short our trip, because of unpredictable weather in the Canadian Rockies. As summer passed into autumn, the nights grew cold, and there was a frosty chill in the night air. At the beginning of September, the mornings were cold and overcast and we saw the geese moving south. The leaves of the trees and bushes had turned yellow and were falling. The days were getting shorter; it was dark by six. August passed into September, bringing foul weather, first rain and then snow.

We keep fresh in our memory the majestic Canadian Rockies, the beauty of lake Louise and Lake Moraine, which makes a primary attraction of Banff National Park, and of course the magnificent Glacier National Park in Montana. During this trip we saw a lot of wild animals: deer, elk, moose etc. We traveled alongside of the Canadian Rockies, which is a panorama like from another world! I like to mention also, that Sarasota Florida, our new residence, is located on Florida's West Coast, and is known as a cultural center as well as an international destination resort. Beside the weather, there are two more wonders in

Florida: the Everglades and Walt Disney World in Orlando.

There are a great many nice places, that could be mentioned, about our many trips, but for this time, I will bring my story to a close.

**TRVP Office Hours**  
**Monday, Wednesday and Friday**  
**10:00 a.m. to 3:00 p.m.**

## Address Changes

If your newsletter label includes the notation "SUPDIST Subscriber" notify the TRVP staff of any change of address, address correction, etc.

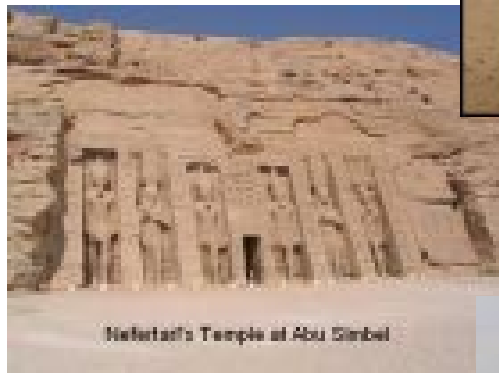
TRVP's address is:  
M/S 58-037  
PO Box 500  
Beaverton, OR 97077  
Phone: 503-627-4056

Otherwise send your information to:

A&I Benefit Plan Administrators  
Tektronix Post Employment Services  
1220 SW Morrison St., Suite 300  
Portland, OR 97205-0149  
Phone: 503-222-7700 or 800-778-7956  
Fax: 503-228-0149 Email: [tek@aibpa.com](mailto:tek@aibpa.com)

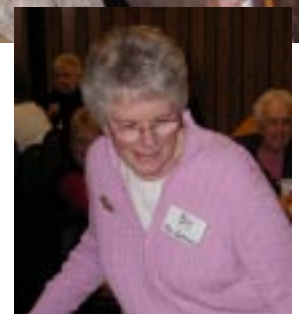
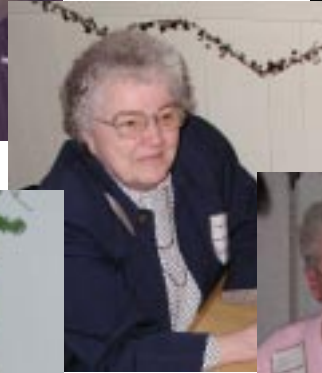
You must include your Social Security number and your signature.

## Photos from the 'Egypt' article





## Christmas at the Beaverton Elks



# TEK RETIREE NEWS

Tektronix  
Retiree  
Volunteer  
Program



Web Page: [www.tekretirees.org](http://www.tekretirees.org)

A Newsletter for and by Tek Retirees

MAY 2005

## Modern Homesteading

By: Mrs. Fred L. Anderson, Jr.

It was a Sunday in February 1980. The children were gone from the nest, creating an almost unbearable stillness at our farmhouse. Thoughts of moving on seemed attractive. Yes, tomorrow I'd stop by the United Farm Agency and pick up a real estate catalog.

Five months later we were standing on an old abandoned homestead of 1888 in the northeast mountains of Oregon. Many hours of dedicated labor would be needed to make this land come alive again. The land consisted of 80 acres of timber and 80 acres of pastureland. The old shallow hand dug well seemed only fit for animal use. Power lines ended six and one half miles away.

In 1984 we left our farm and city jobs to try and restore this old homestead. We moved our belongings into a 40' x 22' pole building we had built on our vacations. Our living area at one end was 12' x 22' with a shallow loft above with room enough for a bed and dresser. A used 12" x 22" wood burning trash burner was used for cooking and heating. Rainwater was collected in buckets placed under down spouts and then strained through a two-gallon metal milk strainer fitted with a replaceable cotton filter. The strained water was then poured into a 50 gallon heavy black plastic barrel. This barrel had an opening on the top of 16" for easy access and cleaning. A sturdy screw-on lid fit tightly. Rainwater collected from metal roofs was not used for drinking or washing green leafy vegetables. Water collected from well-settled snow can equal nearly 3/4 of a gallon of water from 1 gallon of snow. Perhaps almost a ton of snow has been melted during a winter here.

During the first 8 months we were able to make enough lumber from our dead pine trees to build a 40' x 22' enclosed barn, a 20' x 20' shop and a 10' x 10' root cellar. These projects took many hours a day six days a week. We always rested on the seventh day.

That first winter temperatures dropped to a low of -34 with a total of 12' of snowfall. Parts of every day were spent removing snow from walkways, buildings and work areas. Quickly we became very strong and healthy.

Layering our clothing for warmth we were able to work outdoors each day. To keep the cows' water from freezing in their tub we placed the tub in another wood tub surrounded by straw and placed it in their barn. Mounting old snow skis on a wood wagon we built, helped to pull buckets of water from the old hand dug well 700' away. Caring for cows at this 5,000' elevation during winters is difficult. We noticed Red, an 8-month pregnant cow trying to deliver her calf early and coming feet first. Having no phone and two feet of new snow on the road Fred anchored a piece of plywood on top of the 3 point hitch on the tractor for the veterinarian to sit on for the two miles in from the highway, while I found a bright red knee high sock and stretched it over the spotlight on the tractor for a taillight. Thanks to the kindhearted bovine doctor rushing to the scene little Annie survived weighing in at only 26 lbs. The kind doctor declined his perch on the plywood, gave his vehicle all the power it had and raced up the hill.

During the summer of 1986, we laid the foundation for a log house 43' x 34'. We quickly found peeling dead lodgepole pine logs took a lot of muscle power. A flat was cut on two sides opposite each other, leaving two remaining sides to remove the bark with drawknives. We found we could only process nine logs a day. Each log became a special piece of a puzzle to be used somewhere in a house that was to be our home. Using a small chain saw worked well for cutting the mortise and tenon at each intersecting log. The floor joist and inside walls were log, creating even shrinkage throughout the structure. Fred became the chief source of power for seating the logs, except for the small chain saw. Kitchen and bathroom cabinets were created using left over tongue and groove pine flooring we had made. Allowing sometime for the structure to settle, permanent windows replaced temporary ones made of four millimeter plastic sheeting. Our electrical power for the house is supplied by batteries, which are charged by photovoltaic panels.

Going into town was difficult for the first couple of winters and because of this we rarely went. However, on these days Fred would push or ride a bicycle over packed

snow for the first two miles to the highway then another four and one half miles to where our pickup was stored for the winter. Exchanging the bicycle for the pickup he'd drive the four and one half miles back to pick me up. Coming home the process was reversed. We'd then fill my backpack with groceries and strap it on my back. The first mile home was uphill and difficult. Walking in the snow with a heavy load tested our ability to put forth much energy. Darkness came early and we dared not stop for fear of losing momentum and never again being able to gain it back.

Looking back in time we don't really seem to have any regrets of moving here. I've found it best not to contemplate what might have been had our choice been different. I do miss the sound of hot water swishing in the dishwasher and of seeing hot steam rising from under the lid on the washing machine and the clicking sound as clothes tumble and dry to a soft perfection gives one great satisfaction in a job well done. The delight and feel of crisp white uniforms early in the morning cannot be forgotten. It's probably well to remember what Wendell Berry advises, "Be careful when you choose your hardships". Perhaps someday someone will come and replace us here never really knowing the efforts put forth in striving for perfection. Taking time now to observe these seven buildings, having made all the lumber used, I realize the conscious awareness and care only a proficient machinist by trade could achieve. How does one measure success and happiness? Can there really be happiness at the end of life's rainbow? Is happiness the free feeling of being safely tucked away on this mountaintop to work or rest as you please? The Joy of seeing cougar run free

(See Homesteading on page 2)

### Get your Newsletter on Line

A number of retirees are now getting their newsletter from our Web Site.

[www.tekretirees.org](http://www.tekretirees.org).

If you would like to join them send an email to Millie Scott at:

[mlscott@easystreet.com](mailto:mlscott@easystreet.com)

## TekWeek 25 Years Ago

### Tek English tutors honored at party

Tek tutors for the Portland Community College/Tek Education Program's courses were honored at an international holiday party December 13.

Among Tekes who have been tutoring during fall term are David Morgan, Norma Kroetch, Carol Conaway and Jill Borden who help once a week from 3:30 to 5:30 PM and Pat Mundy who has been tutoring twice a week from 1 to 3 PM.

In addition, other Tek volunteers have been tutoring for PCC in the evenings. The response from volunteers was really tremendous," said Liz Brunkow, one of the instructors in the program. "They make a valuable contribution to the program," she said.

An interest in helping others is the only requirement. Course instructors give necessary guidance to help make the tutoring effective.

The winter term of ESL classes begins on Tuesday, January 8. Classes on three levels are taught on Tuesdays and Thurs-

days from 1 to 3 PM or 3:30 to 5:30 PM in the Alaska building (68).

Anyone interested in the classes or in volunteer tutoring may call Tam Martin at Education and Training, ext. 5224 for more information.

### Tek technician-farmer retires

It was only fitting that Ben Braukman (Calibration Testing Labs) ordered German chocolate cake for his December 20th retirement party.

After all, this is the same Ben who every year helps make more than 1700 gallons of sauerkraut and five tons of sausage for the locally famous Verboort sausage and kraut dinner.

Ben's family background well qualifies him for Verboort kraut-makin'. Before coming to the small Dutch Catholic community in the early 40's, Ben lived in Minnesota with his German-born family. His parents, he recalled, spoke English as seldom as possible.

Ben's life in Verboort centers around the 75-acre beef cattle and grain farm, where he and his wife, Clare, raised their five children. For the past 20 years, since coming to Tek, Sandwicing his family in-between the demands of both farm and job has some times been annoying for Ben.

"I love my family," he said, "and now that I'm retiring, we'll have more time to spend together. Before, there was never any free time.

### Tek boilers register peak day

Bitter northeast winds and arctic air shipped through the Portland area again last weekend as temperatures dropped to the mid-teens with an added wind chill factor of -10 to -15.

Boilers at Tek Beaverton recorded a peak day on Monday. In addition, Tek was asked by Northwest Natural Gas Company to cease using gas in the boilers for the duration of the cold spell. The distribution system was unable to deliver gas due to high residential usage.

Some of the new buildings in Wilsonville and Walker Road experienced heating problems and were way below the US government's 65-degree maximum. The same was true in leased buildings such as Administration (Y3).

A few water pipes froze over the weekend at Tek Beaverton but all were minor problems and quickly repaired.

The US Weather Service predicted that the arctic chill would give way to a warming trend and possibly snow by midweek.

### Homesteading (cont. from page 1)

through the meadow and the songs of the coyote in the evening bring delight and enjoyment to one's self. Those who succeed must have a strong commitment to gain something special for themselves, to a way of life you believe in, and letting nothing come between you and that goal.

Looking now out across the garden over the deep snow, carrots and sweet parsnips wait to be dug and enjoyed. Soon new life will appear everywhere. Red rhubarb heads appear and asparagus spears stand tall like many marching soldiers. Strawberry blossoms tell of sweet treats to come, shelves heavy with jams and sauces.

Perhaps success and happiness is a combination of all of these things and they can be enjoyed by anyone who just takes the time to look for it.

You may contact us at:

Mr. & Mrs. Fred L. Anderson Jr.  
73034 Lewiston Hwy.  
Enterprise, OR 97828

### Volunteer Recognition Luncheon

Warren Collier welcomed 50 volunteers to the annual recognition luncheon held in the Bldg 58 cafeteria. This year we had two guest speakers: Cheryl Paul, manager of Hands On Washington County, and Katy Eymann from Life By Design.

Cheryl explained that Hands On Washington County connects volunteers with opportunities that match their schedules and interests. Volunteers select from one-time, group-based volunteering to longer-term opportunities to opportunities for volunteer leadership. They decide among projects at many different non-profits, schools or government agencies. They volunteer alone, with family and friends or with co-workers. In whatever they choose, HOWC volunteers enrich their lives while strengthening our community.

To contact Hands On Washington County, visit their website at:

[www.handsonwashingtoncounty.org](http://www.handsonwashingtoncounty.org)  
or you may phonethem at: 503-846-5796.

Katy Eymann presented information about Life By Design which facilitates life planning after retirement. Katy explained that the project is presently under development. The mission of Life By Design is: "To support people as they age in discovering their passion and purpose and engage their wisdom and skills to strengthen the community and achieve personal fulfillment." The program employs tools and counseling to aid people in the discovery of what they might do with their lives after they retire. Contact Katy Eymann (Project Manager) at Life by Design at:

[keymann@pcc.edu](mailto:keymann@pcc.edu)

or phone: 503-731-6650

Stan Griffiths brought several vintage Tektronix instruments again this year. He has a collection of about 1700 instruments, many of which are in working condition. He will be taking some instruments to the Annual Spring Tek Reunion at the Elks on May 21.



## Retiree Deaths

Date: Feb, Mar, & Apr, 2005

**Armstrong, William** – d. 1/30/2005

At Tek: 4/23/1973 to 4/30/1981

**Babbitt, Mary** – d. 3/10/2005

At Tek: 9/22/1969 to 4/21/1977

**Baldrige, Alice** – d. 4/10/2005

At Tek: 12/27/1961 to n/a

**Bates, Mary** – d. 2/2/2005

At Tek: 5/30/1978 to 9/18/1987

**Bird, Ilva** – d. 3/26/2005

At Tek: 9/23/1974 to 1/31/1990

**Bjornseth, Clifford** – d. 2/17/2005

At Tek: 3/28/1966 to 5/31/1984

**Chaffey, Ramsey** – d. 3/24/2005

At Tek: 10/1/1966 to 7/11/1986

**Cole, Edgar** – d. 2/11/2005

At Tek: 2/1/1960 to 3/29/1978

**Ellis, Benny** – d. 9/12/2004

At Tek: 3/13/1961 to n/a

**Everhart, Wanda** – d. 4/13/2005

At Tek: 5/29/1973 to 1/12/1994

**Fisher, Olive** – d. 4/2/2005

At Tek: 5/3/1965 to 1/6/1978

**Fleury, Catherine** – d. 2/18/2005

At Tek: 7/11/1960 to 4/29/1983

**Franck, Wilson** – d. 2/28/2005

At Tek: 10/31/1955 to 11/22/1963

**Franz, Charles** – d. 3/1/2004

At Tek: 11/15/1978 to 9/2/1988

**Gibson, Thomas** – d. 4/1/2005

At Tek: 12/11/1989 to 2/20/1996

**Hargreaves, Beryl** – d. 4/1/2005

At Tek: not available

**Her, Boua** – d. 1/3/2004

At Tek: 2/18/1980 to 2/15/2003

**Hershiser, Patricia** – d. 4/17/2005

At Tek: not available

**Hudson, Leo** – d. 2/20/2005

At Tek: 4/30/1962 to 5/30/1975

**Johnson, Dorothy** – d. 12/6/2004

At Tek: 4/17/1961 to 8/22/1986

**Jones, Richard** – d. 3/14/2005

At Tek: not available

**Keesey, Michael** – d. 1/18/2005

At Tek: 2/5/1996 to 12/31/1999

**Leeto, Raimond** – d. 12/23/2004

At Tek: 12/15/1955 to 4/29/1983

**Lytsell, Clara** – d. 1/28/2005

At Tek: 6/20/1977 to 4/28/1993

**Mac Millen, Helen** – d. 4/25/2005

At Tek: 8/8/1977 to 6/3/1991

**Monroe, Ramon** – d. 3/7/2005

At Tek: 5/9/1977 to 4/18/1986

**Morland, Hazel** – d. 4/7/2005

At Tek: 5/3/1973 to 10/29/1982

**Morriss, Rose** – d. 3/4/2005

At Tek: 6/13/1966 to n/a

**Murtagh, Richard** – d. 5/19/2003

At Tek: 2/2/1960 to 11/30/1976

**Narits, Leonilla** – d. 2/6/2005

At Tek: 10/31/1977 to 5/30/1983

**Nguyen, Ngoc-Minh Thi** – d. 12/21/2004

At Tek: not available

**Nuttall, Bette** – d. 3/3/2005

At Tek: 11/6/1978 to 3/18/1980

**Nuttall, Robert** – d. 8/11/2003

At Tek: 11/26/1973 to 11/11/1983

**Peterson, Gertrude** – d. 3/4/2005

At Tek: 4/27/1960 to n/a

**Peterson, Sherry** – d. 2/25/2005

At Tek: 9/30/1968 to 6/3/1971

**Petry, George** – d. 3/1/2005

At Tek: 2/13/1961 to 10/17/1975

**Russell, Elizabeth** – d. 2/19/2005

At Tek: 4/13/1970 to 10/14/1988

**Sessions, Keith** – d. 4/7/2005

At Tek: 12/29/1958 to n/a

**Simon, John** – d. 7/1/2003

At Tek: 4/29/1974 to 9/11/1992

**Sutton, Lurley** – d. 3/2/2005

At Tek: not available

**Thompson, Vena** – d. 2/22/2005

At Tek: 7/28/1969 to 4/23/1982

**Trimble, Leona** – d. 3/27/2005

At Tek: 4/30/1979 to 11/26/1990

**Van Loo, Sylvester** – d. 2/9/2005

At Tek: 12/12/1960 to 2/27/1975

**Webber, W.** – d. 3/10/2005

At Tek: 2/1/1951 to 7/22/1977

**Wefers, Elmar** – d. 2/22/2005

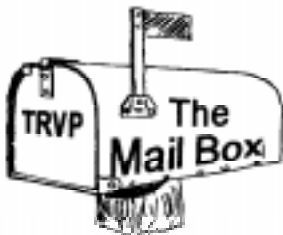
At Tek: 1/29/1962 to 8/22/1986

**White, Ceclia** – d. 3/1/2005

At Tek: 2/17/1959 to 8/11/1981

**Woo, Daniel** – d. 1/26/2005

At Tek: 6/18/1979 to 10/6/1989



**Bobi Perkins:** As I have recently relocated from Welches, Or. to Denver, Co., you asked about an update on my life after Tek. Well, I got laid off in 1994, went to work for a company in Hillsboro for a year, then relocated to Welches. I worked at the Mt. Hood Village Resort which is a beautiful vacationing spot for RV's, campers, and they now have quaint cottages you can rent. After a couple years there, I started at the local (well only) hardware store. I met several other Tek Retirees that also lived there. Ron Rogers (who recently passed away), Pat Buckley and Lou Cummings while working at the store. I lived in a beautiful mountain chalet approximately 12 miles from Gov't. Camp. Most of my time was spent just 'putzing' around the home, fixing this and that. I thoroughly enjoyed working and living there; met lots of very interesting people—from artists to violin makers to doctors to politicians that all enjoyed the beauty of the area. Bill Johnson (who was the first American skier to win a gold

medal in skiing, 1984) also lived there and came into the store quite frequently. Then, grandchildren came along and off to Colorado I went. I'm currently unemployed and have only been here since November, 2004. I'm totally lost in the city as I'm the type of person who loses their car in the parking lot! But, I bought a really good Denver map so that should get me to the grocery store! (I hope). Anyway, that about brings you up-to-date. I'd also like to tell other Tek retirees that my friend of 30 plus years, Nick Norgorden, (who also worked at Tek) passed away very suddenly two years ago. He lived in Bend for many years but we remained close and dear friends. I still miss him terribly but stay in touch with his son, Jimmy. Thanks for the continuing copies of your newsletter which I do enjoy reading. I would like to say 'Hi' to all the people I worked with at Tek and hope you are all enjoying life and staying healthy. My new address is: 49:82 S Ulster St., Apt. 611, Denver, CO 80237.

**Fred & Donna Anderson:** Enclosed you will find a story about Fred's activity after leaving Tek in May of 1984.

Fred is fine and has done very well since leaving Tek. The work here has certainly been a challenge at times mostly due to

our elevation and living beyond the power lines, however the solar power we have has worked very well for us

Fred still uses his machinist ability to machine parts when needed here on the ranch. The four years of machinist training he received at the Naval Shipyard at Vallejo, California after his graduation in 1951 has truly served him well.

Fred enjoyed his work at Tek very much, and still holds a special place in his heart for the employee's he met there. We have enjoyed so much the Tek friends that have come to visit us here.

The Tek News letter has been a great way for us to keep in touch. Thank-you.

**Darrell Barr:** I have spent a number of years of volunteer work maintaining the vintage WWII aircraft for Evergreen Aviation, helping to get the Spruce Goose reassembled to help get the museum started. I also worked for the first year after the museum opened helping with maintaining the display aircraft. In recognition I have received a "Volunteer Lifetime Membership" in the Evergreen Aviation Museum. I am now on an inactive status with the museum except for one small project. I

(Mailbox continued on page 4)

## **Tek Retiree News**

Editor: Louis Sowa    Publisher: Peggy Jo Berg

### **Editorial Staff**

Dick Braniff • Judy Watkins • Millie Scott  
Jennie Lou Werlein • Ray Arnett

### **TRVP Development Team**

Warren Collier      Jess Gard  
Dick Duggan      Harry Tanielian  
Evelyn Marsh      Ed & Roz Srebnik

Tek Retiree Newsletter is published quarterly by the Tektronix Retiree Volunteer Program. Send all correspondence to Tek Retiree News, M/S 58-037, PO Box 500, Beaverton, OR 97077.

**Office Telephone: 503-627-4056**

**TRVP Email: [tek-retirees@exgate.tek.com](mailto:tek-retirees@exgate.tek.com)**

**Editors Cell Telephone: 503-320-0440**

**TRVP Web Page: [www.tekretirees.org](http://www.tekretirees.org)**

Tektronix Retiree Volunteer Program  
M/S 58-037, PO Box 500  
Beaverton, OR 97077-0001

Presorted  
Standard  
U.S. Postage  
PAID  
Beaverton, OR  
Permit No. 1

## **Editorial**

*By Louis Sowa*

With this issue I have been the editor for four years. It has been a very rewarding experience. The best part is the people I have met and the interesting articles and letters that have been sent in.

There is a small group of dedicated people that make the TRVP work, however we could use a couple more volunteers to help with the office chores. A couple things we have not done well are to coordinate volunteer opportunities with retirees, and to keep up the data on who is volunteering for what. If you think you may be interested in helping please contact us at 503-627-4056. We will schedule an appointment

to meet and discuss what needs to be done, and you can meet the people you would be working with over lunch.

### **Annual Tek Retiree Reunion**

This is a reminder of the no-host Spring Tek Retiree Reunion at the Beaverton Elks. A time to meet with new and old friends and reminisce about the good times.

Date: May 21, 2005

Time: 3:00 p.m.

Place: Beaverton Elks Lodge  
3500 SW 104th Avenue  
503-646-6116

### **Annual Potluck in the Park**

Date: June 25, 2005

Time: 11:00 a.m.

Place: Shute Park  
Hillsboro, OR

Invite your friends and co-workers to join you in the park for a fun filled time. All ex-Tek employees, family and friends are invited to join in. Meet us in the area just south of the library parking lot.

Bring a dish to share, your dinner service and drinks. For additional information call the TRVP office at 503-627-4056 or check the TRVP webpage at:

[www.tekretirees.org](http://www.tekretirees.org)

### **Mailbox (continued from page 3)**

am involved with getting two WWII vets I know set up to be video taped about their experiences during the war. These tapes will be archived for future displays. If there are other WWII vets who may want to share their experiences, or donate memorabilia to the museum, I will be happy to steer them to the right person at the museum.

## **Calendar**

### **Marconi's Cronies**

Meet the 2nd Wednesday of each month:  
12:00 a.m.

at J.J.North's Buffet Restaurant  
Northeast Halsey at 105th  
Portland, OR

Contact: Jack Riley for details  
Phone: 503-235-5267

### **CRT Luncheons**

3rd Tuesday of each month at 11:30 AM  
at the Home Town Buffet located at  
13500 SW Pacific Highway in Tigard, OR

Contact: Jack Neff for details  
1301 East Fulton St., Apt. 241  
Newberg, OR 97132-1870  
Phone: 503-554-7440

## **Address Changes**

If your newsletter label includes the notation "SUPDIST Subscriber" notify the TRVP staff of any change of address, address correction, etc.

TRVP's address is:

M/S 58-037

PO Box 500

Beaverton, OR 97077

Phone: 503-627-4056

Otherwise send your information to:

A&I Benefit Plan Administrators

Tektronix Post Employment Services

1220 SW Morrison St., Suite 300

Portland, OR 97205-0149

Phone: 503-222-7700 or 800-778-7956

Fax: 503-228-0149 Email: [tek@aibpa.com](mailto:tek@aibpa.com)

You must include your Social Security number and your signature.

# Modern Homesteading



Vegatables from our garden. The tomatoes were grown inside a 4MM plastic framework furnished with a wood stove. Elevation here is 5,000 ft.



This picture taken on their homestead in 1984, the year Fred retired from Tek.



Fred built these spiral stairs that connect the first floor to the second in our log house.



Fred pouring the cement down a wood slide lined with sheet metal, to form a casing inside the well.



Walls of temporary wood framing holding the cement against the bank to provide the well casing.



Fred pulling buckets of water from the homesteaders well for the cows. Sometimes ice would form on the water before he reached the barn



Cabinets are lodgepole pine. Stove hearth is made of white sand and masons cement using granite and marble stone set in a single iron framework. The floor is also lodgepole pine.

The lighting is 12 volt.



Logs are of dead standing lodgepole pine.



Fred using Alaska 3 chain saw mill to make a large upright support.







The 22X40 foot pole building we lived in for four year. Our living space was 12X22 feet.



Our first solar panels mounted on a large tire rim providing an easy way to rotate the panels toward the sun.

## The Volunteer Luncheon in April



Katy Eymann speaking about  
"Life by Design."



Cheryl Paul from  
Hands on Washington County

Stan





# TEK RETIREE NEWS

Tektronix  
Retiree  
Volunteer  
Program



Web Page: [www.tekretirees.org](http://www.tekretirees.org)

A Newsletter for and by Tek Retirees

AUGUST 2005

## Grand Canyon, Bryce and Zion National Parks

By Judy Watson

May 18, 2004

It has been my goal to see the Grand Canyon since before I retired in 2001 and I was beginning to believe that I would never get there. This was my dream trip and it turned out to be all that I hoped that it would be.

The only place I have ever been in Nevada is Reno and we fly there for a few days each year so on this trip Nevada was not a destination that we were going to, only an area that we had to pass through to get to the Grand Canyon and the other scenic wonders in the area.

As we drove through Nevada I first saw nothing but lonely deserted highways but later I noticed so much more. At first glance everything seemed to be hot, sandy, dry and windy. When I looked closer I saw the snowcapped peaks that surround the desert in every direction, and looking toward the horizon the view of sage, juniper, yucca palms and cacti. The landscape is studded with jagged peaks, vividly hued rock formations and alkali flats that seem sometimes surreal but always majestic.

Many of Nevada's highways retrace the routes blazed by intrepid pioneers and old mining towns remain open for business. As I looked out across the rough terrain my mind pictured the pioneers of the late 1800's and early 1900's going there to seek their fortune and wealth in places like the silver strike in Tonopah in 1901 that netted \$120.5M through 1921 when it finally quit producing.

After visiting both Reno and Las Vegas it is hard to believe that Nevada's population is anything but tourists and visiting gamblers. Actually the state is one of the fastest growing in the country.

Nevada has riches other than the chance to get rich quick at the gambling tables. There are wide-open spaces, endless blue skies, deserts, mountains and the culture of the Native Americans from long before neon invaded the state.

## Train to the Rim

Our first destination was Williams, AZ, a very small town that is actually the Gateway to the Grand Canyon. On our drive there we passed over the Hoover Dam on the Colorado River. One end of the dam is in Nevada and the other end is in Arizona. When the dam was built in 1935 it formed Lake Mead and the beautiful 15 million acre Lake Mead Recreational Area.

We had purchased the Rails to the Rim package to see the Grand Canyon and the trip began in Williams. The package included an exciting vintage train ride to the Grand Canyon. Strolling musicians, cowboys and even a train robbery added to the fun. We rode in an authentically restored 1923 coach car as we took in the beautiful Northern Arizona countryside. Uniformed conductors complete with white gloves served us light snacks of fruit, rolls, juice, coffee and soft drinks in the morning and cheese, crackers, vegetables with dip, lemonade and soft drinks in the afternoon. At 4:45 on the return trip a choice of champagne or sparkling cider was served. Before leaving the depot in the morning we were entertained by a wild-west shootout.

Our lodging and meals were part of the package and we stayed two nights at the Grand Canyon Railway Hotel and ate our meals at the restaurant also owned by the railway.

The highlight was the special guided-narrated motor coach tour to the spectacular viewpoints of the South Rim of the Canyon and lunch at a Rim hotel.

## Grand Canyon

The train ride to the South Rim covered 65 miles and took two hours and fifteen minutes. We were in for a surprise when we came to the rim because the tall pine trees hid the great chasm from view until we were almost at its edge.

When we emerged from the forest we abruptly confronted the breathtaking scene of the canyon. The huge array of colors and rough surfaced rock formations was hard to comprehend. It was a sight that I will never forget and don't have

words to adequately describe other than awe inspiring.

The weather at the rim was unseasonably warm for early March at 67 degrees and clear as a bell. We were assured the colors of the canyon were at their best with the sun radiating on the varied rock formations.

The Grand Canyon road around the South Rim is closed to private vehicles from March 1 through November 30<sup>th</sup>. During this time shuttle buses run every ten minutes at no charge. As part of our tour package we had an escorted motor-coach to take us on the 16 mile Hermit Road and Rim Trail and its eight main viewpoints. Our driver did an excellent job of giving us the history of the park while making sure that we saw the most important parts of this wonder.

The Grand Canyon is 277 river-miles long; it averages ten miles wide and is nearly a mile deep. In 1919 it was declared a National Park. Over five million people from all over the world visit this park every year and walk away struggling for words to describe it.

During summer's peak season 3,000 people work and live in the park. Since Williams, the nearest town, is 65 miles away, commuting is not an option. The park has a school with 250 students serving grades K through 12 for the children of park employees.

Although most of the park's visitors are there just for the day, many others spend a night or more at one of the hotels in the park. While you are in the park there is the opportunity for hiking, mule camping trips, raft trips and much more.

(See **Grand Canyon** on page 2)

## Get your Newsletter on Line

A number of retirees are now getting their newsletter from our Web Site.

[www.tekretirees.org](http://www.tekretirees.org).

If you would like to join them send an email to Millie Scott at:

[mlscott@easystreet.com](mailto:mlscott@easystreet.com)

## Grand Canyon (cont)

The Grand Canyon is a spectacle so awesome that it can only be called the Greatest of Them All!

### Bryce Canyon National Park

Leaving the Grand Canyon we drove north on Highway 89 about 200 miles to Bryce Canyon in Southern Utah. While driving through Northern Arizona we were in awe of the enchanting landscape. I had to stop several times to take photos of the series of colorful spires and buttes and other breathtaking configurations along the way.

About six miles before the entrance of Bryce Canyon we drove through The Red Canyon. Here the red Estrada Sandstone is the basic material of the arches and other formations in the area. The highway passes through two natural red-rock arches that appear to be pieces of fine pottery among the rugged landscape around them. Nature provided the perfect attraction as a warm-up act for the hidden canyon a short distance down the road.

At Bryce Canyon we were in for a surprise. Snow was thick on the ground and piled high along the sides of the plowed roads. The sun was shining, there wasn't a cloud in the sky, and it was 57 degrees. I felt as though the canyon had been decorated just for our enjoyment. I'm sure visitors arriving in any other season would see it from a very different perspective.

Once in the park there is a method for viewing the wonders because similar to The Grand Canyon they are all in a chasm and have to be looked down on from the rim. We first drove to the southern end of Bryce's 18 mile scenic road. On the return journey north there are nine or more marked viewing stations that all exit the main road to the right.

Bryce is best known for its hoodoos – their water-carved walls, fins and spires reflect the moving sun with ever changing colors. We were told that visibility is at its best in the winter when the wind comes from less polluted places. There are spots where the views are up to 200 miles and nothing stops seeing as far as Arizona and sometimes New Mexico.

Inspiration Point takes on mystical qualities and becomes a visual parafait as layers of snow outline the layers of the hoodoos. In Fairyland Canyon the ways of erosion are clearer when snow outlines the hoodoos. Vertical faces shed snow as the slopes below accumulate it. North slopes hold the snow even as the sun melts it on the southern slopes.

Bryce Canyon is home to an incredible variety of plant and animal life and fed the native people for hundreds of years before it was declared a National Park.

The park's uncommon beauty stirred me. Everything is so big, so magnificent and in some ways bizarre. I was thankful that we included this park on our trip. It was an experience long overdue in my travels.

### Zion National Park

After we visited Bryce Canyon we headed south again on Highway 89 to Zion National Park just 89 miles away. The main road through Zion is 12 miles of winding roads with many switch-backs ending at Springdale, UT. The park is open year-round.

We entered Zion from Mt. Carmel Junction, passing through miles of contorted cross-bedded Navajo Sandstone as we descended into the depths of Zion Canyon. Unlike the other parks we visited, here we looked up to see all the wonders around us. As we drove we saw the canyon walls soar above river bottom woodlands hosting a variety of trees such as cottonwoods and box-elders.

Zion features massive stone formations and red cliff faces. Sandstone and shale monoliths give the park its power and character. The lack of iron oxide at the upper levels of the Navajo Sandstone enhances the beauty by making the formation's tops almost white.

The highest peak is the West Temple at 7,810 feet in the southern portion of the park. It rises over 4,100 feet from its base in a series of colorful layers.

Nearing the east end of Zion Park is a one-mile tunnel that was blasted out of solid sandstone between 1927 and 1930. At the time it was an engineering miracle. Today it is equally as impressive as it molds itself into the magnificence of the park.

In the 1850's and 60's the Southern Government sent settlers to this area of Utah to grow cotton because of the war-caused shortage. Until 1909 when Zion was declared a National Monument and later a National Park, cotton, tobacco, fruit and vegetables were grown on the canyon's floor. Sheep and cattle also grazed there.

The wonders of the landscape continued well outside the boundaries of the park, then suddenly about 20 miles after leaving Springdale we dropped over a hill and the jagged and beautiful red-rock formations turned back into the blue-tinted and snow-covered mountains so familiar in Nevada.

Beauty of the unknown has enticed us to explore the exotic treasures of the world, yet there is a special quality about our own National Park System that also needs to be explored.

We visited only three of the seven parks in this part of our country even though the others are within an eight hour drive. These parks make up the largest concentration of National Parks anywhere on earth. The parks left for another time include:

- The North Rim of the Grand Canyon is in Arizona and about 215 miles from the South Rim. The North Rim is closed during the winter months. Only 10% of the visitors to the Grand Canyon visit the North Rim.
- Capitol Reef National Park is in Utah and NE from Bryce. It has 250 million acres of towering cliffs and eroded landscape.
- The Arches National Park is five miles north of Moab, UT.
- Canyonlands National Park is North on Highway 191 from Arches.

Our two week trip to the parks in Arizona and Utah will always be a highlight in my memories. There is so much more for me to see in this country and there are as many treasures here than anywhere in the world.

NOTE: We used AAA for a travel agent for this vacation. They provided maps for every state we visited and the larger cities as well. They provided books recommending places to see and things to do. They helped lay out our trip, sent a map with the route highlighted, and even made all of our hotel and tour reservations. Their services were as good as or better than any tour company we have ever used. I will use them for our next domestic trip and would recommend their services to anybody taking a trip.

## Picnic In The Park

The picnic was a wonderful time enjoyed by approximately 18 persons sharing old and new experiences and a great potluck lunch. The weather was an added bonus. Attending were: Evelyn Marsh, Ruth Taylor, Darrel Taylor, Louis Sowa, Gene Brink, Helene Kluge, Polly Jennings, James and Lynn Manuel, Howard Allen, Charlette Peterson and Coleen Lloyd, Raul and Pauline Varela, Dorothy Swank Johnston and Frank Mravunac. We hope to see many more join us next year.

**Adkins, Lennie** – d. 4/21/2005

At Tek: 1/3/1966

**Amrine, Robert** – d. 6/14/2005

At Tek: not available

**Anderson, Ethel** – d. 6/23/2005

At Tek: 9/18/1961 to 4/29/1983

**Burrows, Betty** – d. 5/26/2005

At Tek: 1/28/1957 to n/a

**Capps, James** – d. 4/23/2005

At Tek: 6/12/1972 to 9/24/1993

**Cathery, Marlyse** – d. 7/3/2005

At Tek: 11/1/1976 to 7/23/1991

**Chappell, Jesse** – d. 5/19-2005

At Tek: 9/19/1960 to 1/29/1982

**De Long, William** – d. 4/5/2005

At Tek: 4/19/1978 to 10/12/1990

**Donovan, Orval** – d. 5/6/2005

At Tek: 2/13/1974 to 7/23/1991

**Fear, Beverly** – d. 5/24/2005

At Tek: 4/3/1961 to 5/30/1983

**Forbes, Andrew** – d. 6/3/2005

At Tek: 4/22/1974 to n/a

**Gilbertson, Marlyn** – d. 10/24/1997

At Tek: 8/11/1969 to 4/9/1986

**Hanson, Loretta** – d. 6/10/2005

At Tek: 1/4/1978 to n/a

**Hargreaves, Beryl** – d. 4/1/2005

At Tek: not available

**Haugsbys, Bernard** – d. 5/17/2005

At Tek: 8/14/1972 to 1/6/1984

**Hendricks, Peggy** – d. 4/24/2005

At Tek: 3/15/1965 to 3/20/1992

## Retiree Deaths

**Date: May, Jun, Jul, 2005**

**Herrick, Geoffrey** – d. 6/7/2005

At Tek: 7/19/1978 to 5/27/1994

**Hershiser, Patricia** – d. 4-17-2005

At Tek: not available

**Hilden, Cora** – d. 2/3/2005

At Tek: 7/21/1958 to 7/31/1981

**Hing, Mary** – d. 7/14/2005

At Tek: 10/13/1969 to n/a

**Hutchison, Blanche** – d. 3/23/2005

At Tek: 3/22/1978 to 5/20/1988

**Infante, Carlo** – d. 5/12/2005

At Tek: 10/11/1961 to 7/20/1984

**Jarvis, Shirley** – d. 3/16/2005

At Tek: 10/30/1978 to 1/3/1989

**Jendraszek, Robert** – d. 4-6-2005

At Tek: not available

**Kretzinger, Loren** – d. 4/25/2005

At Tek: 1/12/1959 to 4/29/1983

**Kuykendall, Robert** – d. 5/8/2005

At Tek: 1/26/1970 to 4/30/1982

**Larsen, Eleanor** – d. 5/20/2005

At Tek: 1/20/1959 to 8/31/1978

**Lewis, Donald** – d. 4/18/2005

At Tek: 2/27/1995 to n/a

**Lindsey, Lonnie** – d. 2/20/2005

At Tek: 11/21/1988 to 3/10/1995

**Martin, Dorothy** – d. 4/29/2005

At Tek: 10/23/1967 to 8/31/1979

**Mc Corkle, Juanita** – d. 7/13/2005

At Tek: 2/3/1959 to 1/11/1980

**Murray, Charles** – d. 4/14/2005

At Tek: not available

**Nichols, Margaret** – d. 6/5/2005

At Tek: 5/9/1977 to 11/27/1993

**Peetz, Opaline** – d. 5/14/2005

At Tek: 12/4/1972 to 3/30/1979

**Polits, William** – d. 5/2/2005

At Tek: 6/12/1950 to 12/29/1950

**Richardson, Ronald** – d. 5/19/2005

At Tek: 3/16/1959 to 5/27/1976

**Sample, Phyllis** – d. 6/14/2005

At Tek: 10/7/1974 to 8/12/1988

**Schmidt, Alfred** – d. 6/16/2005

At Tek: 8/2/1967 to 6/28/1985

**Scott, Wilma** – d. 5/4/2005

At Tek: 8/26/1968 to 3/27/1983

**Seng, Kimsan** – d. 7/12/2005

At Tek: 8/15/1977 to n/a

**Sutton, Sandra** – d. 4/26/2005

At Tek: 8/29/1977 to n/a

**Tucker, Rheba** – d. 6/1/2005

At Tek: not available

**Warren, Barbara** – d. 4/21/2005

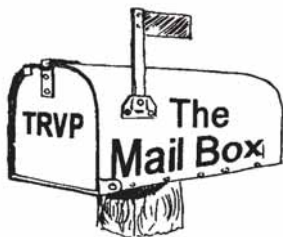
At Tek: 2/8/1956 to 4/29/1983

**Watson, James** – d. 6/20/2005

At Tek: 4/10/1978 to n/a

**Wood, Penelope** – d. 4/25/2005

At Tek: 5/27/1968 to 5/27/1994



**Trudy Belcher** – After retiring from Tek I became interested in genealogy so did much traveling around and doing research on my family. I met many interesting people and learned much I didn't know about my ancestors. I made my first trip to Quebec and helped with a dedication to my French Canadian ancestors from 300 years ago. I co-authored a book with my cousin. LP Bonneau on our ancestors. Then for my children, I did research on the Belcher side of the family with a Belcher researcher in MA. We then did a book on the Belcher family. I received a box of old letters on the Steptoe/Jones side of my family from England. I met families from that line and took the Steptoe line back to the early 1700's.

With all that behind me I am now devoting my time to crocheting afghans for the N. W. Children's Outreach and for my church to give where needed.

I also spent a number of years in Northern California where I owned and operated a furniture store.

**Wayne Sherbahn** – There is life after Tek. I started at Tek in Electro-Chem., Building #38 in 1968 and worked in Facilities Maintenance there until I transferred to Walker Road Facilities when they opened in early 1980. I worked at Walker Road until I was unceremoniously laid off due to cutbacks in 1993.

I took my severance package for 25 years and went looking for a job. I didn't have to go far, as I went to work for the Amberglen Business Center at the Oregon Graduate Center as their building engineer. We built many commercial buildings and leased them to different companies like Intel, Nike, etc.

In 1993 I married Shirley and we have been very happy together. In 1994 we bought a big motor home and started traveling in our spare-time. In 1998 Shirley retired from US West after 30 years, so I retired from Amberglen and we started traveling. We found an RV park in Southern Arizona to spend the winter in, and set about exploring the area. The

community of Green Valley is a 55+ unincorporated town with about a dozen recreation centers with pools and all the amenities. There are many golf courses here in the Green Valley area.

We sold our home in Hillsboro and had a home built here. We use this as our base and travel back to the Northwest in the summer. We are about 20 miles South of Tucson, so we fly out of there on various trips, Alaska last year and recently Hawaii. Our days are as uncomplicated as possible. Shirley does water aerobics at the pool in the morning with the neighbor ladies and then after lunch we go back to the pool for an hour. After that, we usually socialize with the neighbors for the 3:30 beer break and bull Session.

We have decorated our home in Southwest motif through various crafts. Shirley does ceramics at the rec center and does beautiful work. She also does cross-stitch and decorates gourds. I do very elaborate stained glass projects. Some of my projects are three dimensional with lights in them. Many are with desert scenes with cactus, table rock mountains and hummingbirds. As you can see, there is life after Tek. I

(See MAIL on Page 4)



## Tek Retiree News

Editor: Louis Sowa Publisher: Peggy Jo Berg

### Editorial Staff

Dick Braniff • Judy Watkins • Millie Scott  
Jennie Lou Werlein • Ray Arnett

### TRVP Development Team

Warren Collier Jess Gard  
Dick Duggan Harry Tanielian  
Evelyn Marsh Ed & Roz Srebnik

Tek Retiree Newsletter is published quarterly by the Tektronix Retiree Volunteer Program. Send all correspondence to Tek Retiree News, M/S 58-037, PO Box 500, Beaverton, OR 97077.

Office Telephone: 503-627-4056

TRVP Email: [tek-retirees@exgate.tek.com](mailto:tek-retirees@exgate.tek.com)

Editors Cell Telephone: 503-320-0440

TRVP Web Page: [www.tekretirees.org](http://www.tekretirees.org)

Tektronix Retiree Volunteer Program  
M/S 58-037, PO Box 500  
Beaverton, OR 97077-0001

Presorted  
Standard  
U.S. Postage  
PAID  
Beaverton, OR  
Permit No. 1

## Editorial

*By Louis Sowa*

The principle story in the last issue by Mrs. Fred L. Anderson was very well received. I appreciate the variety of articles sent to us. This issue we have an article by Judy Watkins, our world traveler, this time staying in the United States. Under the Letters to the Editor in this issue is a submission by Jim Richardson who volunteers at KBPS radio. He has agreed to put together an article with pictures for the next issue of the TRN.

We have received some positive feedback about pictures on the web. It is cost prohibitive to have color pictures in the hardcopy version; occasionally we insert a monochrome one. If you have internet

access take a look at the pictures which are at the end of the newsletter, usually page 5 and 6.

There are two primary objectives for the TRN: 1) as a communication tool for retirees, 2) as a means to help get retirees involved in volunteer activities. If you are volunteering and are not invited to the April Volunteers Dinner, you should let us know. It helps justify our existence to Tek, and you will be invited to the next luncheon.

Peter is, also, Chairman of the tech committee, and board member at KBPS.

Another former Tek employee, but not a retiree, Phil Biehl, also donated many hundreds of hours to the project. I have attached a scan of the KBPS newsletter "Station Break". Perhaps now 89.9 can be heard in the middle of bldg. 50?

If you would like more info, pictures etc., please contact me. Phone: 503-640-0580,

## Calendar

### Marconi's Cronies

Meet the 2nd Wednesday of each month:  
12:00 a.m.

at J.J.North's Buffet Restaurant  
Northeast Halsey at 105th  
Portland, OR

Contact: Jack Riley for details  
Phone: 503-235-5267

### CRT Luncheons

3rd Tuesday of each month at 11:30 AM  
at the Home Town Buffet located at  
13500 SW Pacific Highway in Tigard, OR

Contact: Jack Neff for details  
1301 East Fulton St., Apt. 241  
Newberg, OR 97132-1870  
Phone: 503-554-7440

### Mail (continued from page 3)

would like to hear from anybody who remembers me from the good old days.

My address is 846 W. Ashworth Rd, Green Valley AZ 85614

Email: [ssherbahn@cox.net](mailto:ssherbahn@cox.net)

**Jim Richardson** – Just a quick note about what a couple of Tek retirees have been up to.

Peter Keller and I have been involved (as volunteers) in a year+ project, that has resulted in improved signal strength of Portland's Classical music station, KBPS. We were involved in all aspects of the project, from initial planning, to the "flip of the switch" on May 10.

## Address Changes

If your newsletter label includes the notation "SUPDIST Subscriber" notify the TRVP staff of any change of address, address correction, etc.

TRVP's address is:  
M/S 58-037  
PO Box 500  
Beaverton, OR 97077  
Phone: 503-627-4056

Otherwise send your information to:

A&I Benefit Plan Administrators  
Tektronix Post Employment Services  
1220 SW Morrison St., Suite 300  
Portland, OR 97205-0149  
Phone: 503-222-7700 or 800-778-7956  
Fax: 503-228-0149 Email: [tek@aibpa.com](mailto:tek@aibpa.com)

You must include your Social Security number and your signature.



# Portland inventor Hiro Moriyasu dies

The former Tektronix engineer, 70, created the digital oscilloscope and one of the first PCs  
Saturday, July 23, 2005

For the complete Oregonian article go to:

<http://www.oregonlive.com/business/oregonian/index.ssf?/base/business/112211309676831.xml&coll=7>

---

## Shute Park Picnic

June 2005



# TEK RETIREE NEWS

Tektronix  
Retiree  
Volunteer  
Program



Web Page: [www.tekretirees.org](http://www.tekretirees.org)

A Newsletter for and by Tek Retirees

NOVEMBER 2005

## Ex-Tek Engineers Volunteer in Community Radio

By: *Jim Richardson and Louis Sowa*

Jim Richardson sent an email suggesting that an article on volunteering in community radio might make a good article for the TRN. I agreed, so in this issue there is information primarily about three ex-Tek engineers who have become an important part of KBPS radio. KBPS is a classical music radio station. There are also opportunities in several other stations, two others I am aware of are KBOO and public radio KOPB. It is possible to become an "on air personality," radio engineer, or provide computer support, as well as other functions at the station. This is a great way for technical people to stay involved, especially those with an interest in radio broadcasting.

### Preamble

Jim's history below starts with the history of the major update to KBPS. This station originated at Benson Polytechnic. Stations tend to evolve. Interestingly KBOO started as a classical music station, and is currently a pretty eclectic station with no classical music. A bio of the three ex-Tekies, Jim, Pete and Phil is included below. They provided a great number of pictures and far more material than can be presented in the TRN. There are some pictures on the web version. However, for those of you with technical interest in KBOO's new digital transmitter, combiner and antenna installation I will put more information and photos under "Photos" on the Website.

### History

The history of the KBPS signal improvement project dates back to before the "turn of the century", when it was decided that the channel 6 TV tower, which supported the KBPS FM transmitting antenna, would be replaced with a new structure to accommodate Digital Television Transmission. At that time, a new transmitter building was designed to house the various transmitters that would eventually move to the new tower. The moves have been ongoing since the tower was completed in 1997.

When it became time for the FM's to move, many scenarios were explored, and it was decided that the requirements of three non-commercial FM (KBVM, KMHD and KBPS) stations could be best met if they were to share a common antenna. Plans were made, agreements drawn up, requests for quotation sent out. After the equipment was selected, orders were submitted, and the "bits and pieces" started to arrive.

See [www.tekretirees.org](http://www.tekretirees.org) under "Photos" to see a "photo essay" with some steps involved in putting the KBPS radio transmitter update on the air.

### Jim Richardson ("JR")

Jim retired from Tektronix in June of 2001 after a 36 plus year career as an engineer, working for the most part in CRT-related activities. These include: phosphor research, CRT design and production support, color shutter design and production support, and production support of the monitors assembly group. Jim was issued one patent and one trade secret, while at Tektronix.

(See **Community Radio** on Page 2)

**TRVP Office Hours**  
Monday, Wednesday and Friday  
10:00 a.m. to 3:00 p.m.

## Annual Gathering at Elks

The annual no-host gathering at the Beaverton Elks is coming up on December 9th. Be sure to mark your calendar. All previous Tek employees are invited to come and bring their husbands, wives or friends. It is a time to reminisce and enjoy fellowship with everyone. This gathering was originally started by Bill Tescher and his Tool and Dye group and later changed to include everyone. We hope you will come and enjoy a great time with us.

Place: Beaverton Elks  
Address: 3500 SW 104<sup>th</sup>  
(North of Highway 8)  
Date: December 9, 2005 (Friday)  
Time: 11:00 a.m. to ????

Al Foleen is in charge of arrangements again this year. If you have any questions he may be contacted at:

Phone: 503-651-2031

## PLEASE NOTE

### ADDRESS CHANGE PROCEDURE MODIFIED

**Effective 9-1-2005 all address changes must be reported as follows:**

Anyone who is a post employee with Retiree Medical and/or Life Insurance or who participate in the Cobra Plan will need to report their changes in writing to A & I. You must include your signature and Social Security Number

Tektronix Post Employment Services  
c/o A & I Benefit Plan Administrators, Inc.  
1220 SW Morrison St., Suite 300  
Portland, OR 97205-2222  
Phone: 503-222-7700  
Toll Free: 1-800-778-7956  
Fax: 503-228-0149

Anyone who has a pension and/or 401K benefit must contact Mercer HR Consulting to change their address directly with them.

Phone: 1-866-867-6860

If your newsletter label includes the notation "SUPDIST Subscriber" notify the Tektronix Retiree Volunteer Program staff of a change of address, address corrections, etc.

Tektronix Retiree Volunteer Program  
M/S 58-037  
PO Box 500  
Beaverton, OR 97077  
Phone 503-627-4056



## Community Radio (continued)

Radio related hobbies have nearly always been a part of his lifestyle, from collecting and restoring vintage radios to "DXing" (listening to weak distant signals), to enjoying classical music such as that broadcast by KBPS All Classical 89.9.

Involvement as a volunteer at KBPS began in June of 2002, after some gentle arm twisting to join the Technical Committee, by long time Tek friend Peter Keller.

Since then Jim has been involved in many aspects of the technical performance of the station, including the efforts on the construction of the new transmitter facility.

"It was very rewarding, and a lot of fun to work with engineers and contractors to improve the KBPS-FM signal and bring classical music into the "digital age" through the installation of a "HD radio" digital transmitter.

### Pete Keller

Pete started at Tektronix in 1963 and retired in 2001 after almost 37 years. He began in CRT engineering doing electro-optical characterization of screens. He later held engineering positions for displays, photometers, digital voltmeters, and portable digital oscilloscopes.

Pete was issued two patents while at Tek, wrote numerous technical articles and has had two solo photo exhibits in Portland and Eastern Europe. He also is the author of two books, *The Cathode-Ray Tube* about CRT history and *Electronic Display Measurement*. Since retiring from Tek, he has presented a series of classes on display technology for Sony plant managers in San Diego.

His interests include astronomy, photography, amateur radio (W1CRT), and classical music. The latter led to becoming a member, and eventually chairman, of the KBPS Technical Committee. He was elected to the board of directors of the station in 2002. Pete also did daily FCC transmitter inspections for another non-commercial station, KBOO, during the 1970s.

"Technical committee members were able to perform much of the installation work on the new transmitters and antenna system at a level of quality that is the envy of Portland's commercial broadcasters. Pete says "The cost of such a high quality installation would have otherwise been prohibitive for a listener supported station."

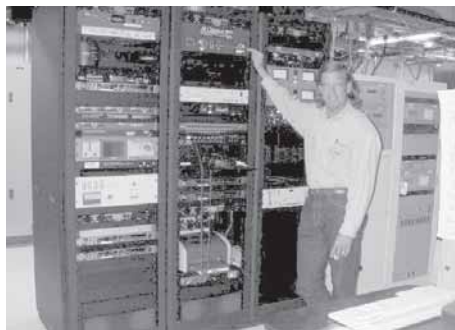
### Phil Bieh

Phil started with Tektronix (Wilsonville) starting in 1983 as a digital designer for the Engineering Computing Systems group. He worked on display engines and the micro-code software that ran this engine, as well as a 3D version. After ECS was shut down, he worked on other versions of the display engines for various projects, as well as digital design, PCB and ASIC for networked display terminals. Since leaving Tek in 1989, he has held positions at several technology based operations in the area (such as Planar). He recently accepted a Position with Infinity in Portland as chief engineer for KUFO/KVMX.

Phil has been interested in electronics, radio and computers since early childhood when a Radio Shack kit provided an early introduction into the field. Phil holds an amateur Radio license.

Phil has been involved as a KBPS Technical committee volunteer since Nov. 2002.

Phil played a major role in the construction of the KBPS transmitter facility, including the construction and installation of innovative I/O panels, and the installation and programming of the extremely complicated Davicom Mac+ remote control system.



### Ever Consider Elderhostel?

By: Neil Robin

If you enjoy traveling, there's a way to get lots of enjoy it with people of retirement age like ourselves. It's called Elderhostel. The objective is to mix travel with education and provide adventures all over the world at a reasonable cost

Marsha and I just returned from our second trip which was to Southern Utah and Northern Arizona. We visited many of the National Parks and studied the geology and native people along the way. There were forty one of us, we had a great time. A quick picture snapshot can be seen at: <http://robin-wood.com/Powell/utah.htm>.

More on Elderhostel can be found at: <http://www.elderhostel.org>. Try it, you may find it's just the ticket for post-career

learning. It's also an opportunity to volunteer.

### Living to be 100

Jim Manuel gave me an article from the Harvard Health Letter that he thought would make a good article for the TRN. My intention here is to review this article. If you wish to read the whole article it is available at:

[www.health.harvard.edu](http://www.health.harvard.edu)

It is helpful to have the importance of life style and diet reinforced. I do not expect to live to be 100, but would like to remain reasonably healthy for as long as I do live. I would like to quote a part of the article that describes my feeling, in Oliver Wendell Holmes's poem "The Deacon's Masterpiece." he describes "The shay as a carriage built so carefully by the deacon that no single part breaks down for 100 years. Then it all collapses at once, and nothing first. Just as bubbles do when they burst."

There are some specific traits that are prevalent in those that live a longer than average life, some of these are:

### Calendar

#### Marconi's Cronies

Meet the 2nd Wednesday of each month:  
12:00 a.m.

at J.J. North's Buffet Restaurant  
Northeast Halsey at 105th  
Portland, OR

Contact: Jack Riley for details  
Phone: 503-235-5267

#### CRT Luncheons

Meet the 3rd Tuesday of each month  
11:30 a.m.

at Home Town Buffet  
13500 SW Pacific Highway  
Tigard, OR

Contact: Jack Neff for details  
1301 East Fulton St., Apt. 241  
Newberg, OR 97132-1870  
Phone: 503-554-7440

#### PCB Design Old Timers Luncheon

Meet the 3rd Wednesday of each month.  
Time: 12:00 a.m.

Where: Peppermill Restaurant  
Farmington Mall  
Corner of Farmington and Kinnaman Rd.  
17455 SW Farmington Rd # 26B  
Aloha, OR 97007

Web Page: [www.geocities.com/pcboldies/](http://www.geocities.com/pcboldies/)

## Retiree Deaths

Date: Aug, Sep, Oct, 2005

**Armstrong, Leona** – d. 10/4/2005  
At Tek: 9/20/1974 to 11/25/1988  
**Bannick, Marie** – d. 8/20/2005  
At Tek: 10/14/1974 to 8/8/1980  
**Banta, Ruth** – d. 8/29/2005  
At Tek: 12/10/1973 to 5/28/1990  
**Bartlett, Wilma** – d. 10/20/2004  
At Tek: 5/2/1977 to 5/31/1985  
**Bonifacio, Edilberto** – d. 7/17/2005  
At Tek: 2/20/1978 to 7/28/1992  
**Brinegar, Tiffany** – d. 6/27/2005  
At Tek: 9/18/1972 to 7/11/1986  
**Buckley, Bok** – d. 9/28/2005  
At Tek: 1/12/1976 to 1/16/1985  
**Cathery, Marlyse** – d. 7-3-2005  
At Tek: 11/1/1976 to 7/23/1919  
**Cronkrite, June** – d. 10/23/2005  
At Tek: 11/14/1977 to 6/22/1990  
**Curtis, David** – d. 8/12/2005  
At Tek: 5/23/1960 to 7/21/1978  
**Daniel, Roscoe** – d. 8/7/2004  
At Tek: 3/26/1951 to 6/25/1982  
**Dungan, Glenda** – d. 9/11/2005  
At Tek: 12/12/1983 to 5/30/1997  
**Eager, Ronald** – d. 8/3/2005  
At Tek: 5/3/1965 to n/a  
**Erickson, Leola** – d. 5/12/2005  
At Tek: 4/22/1974 4/29/1994  
**Glanz, Emma** – d. 9/12/2005  
At Tek: 7/16/1958 to 3/11/1977

**Hahn, James** – d. 7/27/2005  
At Tek: 8/26/1965 to 7/20/1993  
**Hardman, Gerald** – d. 9/20/2005  
At Tek: 5/16/1966 to 5/31/1991  
**Hart, Norma** – d. 9/10/2005  
At Tek: 8/14/1974 to 5/30/1986  
**Hemmerling, Rosalie** – d. 8/15/2005  
At Tek: 4/18/1966 to 5/31/1991  
**Hinsbeeck, Rudy** – d. 7/29/2005  
At Tek: 12/19/1960 to 8/28/1981  
**Johnson, Evelyn** – d. 10/17/2005  
At Tek: 4/23/1951 to 1/30/1981  
**Knight, Truman** – d. 8/4/2005  
At Tek: 11/10/1958 to 8/15/1975  
**Leeto, Vilma** – d. 9/6/2005  
At Tek: 8/6/1952 to 4/29/1983  
**Meeker, Helen** – d. 10/18/2005  
At Tek: not available  
**Moriyasu, Hiro** – d. 7/17/2005  
At Tek: 6/14/1956 to 6/13/1986  
**Mull, Grover** – d. 7/10/2005  
At Tek: 12/18/1967 to 8/22/1986  
**Murray, Charles** – d. 4/14/2005  
At Tek: Not Available  
**Packard, Patricia** – d. 6/23/2005  
At Tek: 4/3/1978 to 6/21/1992  
**Porter, Charles** – d. 9/28/2005  
At Tek: 1/30/1959 to 11/30/1973  
**Prohaska, Lorraine** – d. 8/27/2005  
At Tek: 7/16/1962 to 1/9/1976

**Rash, Duane** – d. 9/23/2005  
At Tek: 12/9/1958 to 5/14/1982  
**Revier, Eugene** – d. 8/24/2005  
At Tek: 1/26/1970 to 8/12/1988  
**Roberts, Lori** – d. 10/17/2002  
At Tek: 10/12/1977 to 9/15/1998  
**Rodenbaugh, Leonard** – d. 5/30/2005  
At Tek: 11/6/1967 to 10/28/1983  
**Roniatch, Pamela** – d. 9/18/2005  
At Tek: 6/3/1974 to 4/4/1986  
**Sage, La Vere** – d. 3/7/2005  
At Tek: 8/16/1966 to not available  
**Sharp, Dorothy** – d. 8/19/2005  
At Tek: 1/4/1960 to 6/4/1981  
**Shefchek, Paul** – d. 8/15/2005  
At Tek: 8/15/1966 to 7/9/1999  
**Sorensen, Isabella** – d. 8/19/2005  
At Tek: 6/10/1962 to 8/6/1973  
**Strickland, Barbara** – d. 7/27/2005  
At Tek: Not Available  
**Thornton, Doris** – d. 8/4/2005  
At Tek: 4/11/1976 to 4/4/1996  
**Tucker, John** – d. 5/25/2005  
At Tek: 9/12/1960 to 4/29/1983  
**Vasquez, Sandra** – d. 7/18/2005  
At Tek: 2/21/1966 to 4/13/1988  
**Waldkirch, Virginia** – d. 9/4/2005  
At Tek: 10/20/1975 to 7/9/1985  
**Wilkes, Rose** – d. 9/8/2005  
At Tek: 1/21/1957 to 3/21/1980

- Having a positive outlook, managing stress well. Those that do not manage stress well have higher rates of memory loss and heart disease.
- These people are friendly and have close ties to friends and family.

Then there is the question of genes. Not all traits that run in families are genetic, some are cultural, such as eating habits. Some of these eating habits are:

- Eating many fruits and vegetables.
- Getting regular physical activity.
- Challenging their minds. (This one, I believe, is very important).
- Not smoking or drink heavily.
- Gaining little or no weight as an adult. (This is a tough one for most of us).

Our culture encourages over-eating and the consumption of way too much fat, sugar, and salt. In studies it has been documented that people from cultures that did a better job following the above philosophy are healthier and live longer than Americans. When individuals from these cultures moved here and adopted our eating habits and life style their health deteriorated.

## TEK TALK

*Tek-Talk September 1964*

### TEKNEWSREEL

About 15 Tektronix oscilloscopes are being used in exhibits at the New York World's Fair, according to George Muckenstrom, Long Island field engineer.

Major exhibitors with Tek scopes are the Bell System, RCA, National Cash Register, International Business Machines, Visual Electronics (Hall of Education), Automedic and General Electric.

A Type 564 Scope is being used in General Electric's Nuclear Fusion demonstration as a monitoring device to display to the public the neutron yield in their deuterium gas plasma experiment. A 564 is in use as an operating room instrument in the Automedic display.

*Tek Talk February 10, 1956*

### THE F.B.I.N

Shipping department took the challenge from Scott Foster of Purchasing. Scott

didn't think they could ship 800 scopes in January, and bet them a box of candy and a box of cigars, on the strength of it. Tuesday, January 31st there was a cloud of cigar smoke floating all through the shipping area and Bufferin doled out for the toothaches. Front office enjoyed the box of candy very much too. Dick Schmidt has made an offer of some more candy for next month. Watch those calories, fellas!

*Tek-Talk September 1964*

### TEKNEWSREEL

Acquisition of Pentrix Corporation, Brooklyn manufacturer of spectrum analyzers, was announced in April. The small company became part of Tektronix through transfer of 30,002 shares of Tektronix, Inc. stock.

In June 8330 shares were issued. The remaining 21,672 shares will be issued in installments over the next four years, contingent on spectrum analyzer sales.

Three Pentrix owners – Arnold Frisch, Larry Weiss and Morris Engelson – joined Tektronix Engineering in June to continue their work on spectrum analyzers.

(See Tek-Talk on Page 4)



## Tek Retiree News

Editor: Louis Sowa Publisher: Peggy Jo Berg

### Editorial Staff

Dick Braniff • Judy Watkins • Millie Scott  
Jennie Lou Werlein • Ray Arnett

### TRVP Development Team

Warren Collier Jess Gard  
Dick Duggan Harry Tanielian  
Evelyn Marsh Ed & Roz Srebnik

Tek Retiree Newsletter is published quarterly by the Tektronix Retiree Volunteer Program. Send all correspondence to Tek Retiree News, M/S 58-037, PO Box 500, Beaverton, OR 97077.

Office Telephone: 503-627-4056

TRVP Email: [tek-retirees@exgate.tek.com](mailto:tek-retirees@exgate.tek.com)

Editors Cell Telephone: 503-320-0440

TRVP Web Page: [www.tekretirees.org](http://www.tekretirees.org)

Tektronix Retiree Volunteer Program  
M/S 58-037, PO Box 500  
Beaverton, OR 97077-0001

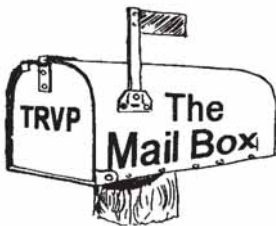
Presorted  
Standard  
U.S. Postage  
PAID  
Beaverton, OR  
Permit No. 1

## TekTalk (cont.)

Pentrix product was designed as a plugin unit for several Tektronix oscilloscopes, converting them to frequency-based instruments.

According to market researchers, the spectrum analyzer market is in the neighborhood of \$8 – 10 million per year.

“Pentrix fits well into Tektronix’ manufacturing and marketing organization and offers new markets for both its present and acquired products,” Bob Fitzgerald (vice-president, Operations) stated when making the announcement.



**Gary A. Hazelton**—Is trying to locate the film of the construction of Bldg 50. At a Tek reunion five or so years ago, a fellow told me that Howard Vollum wanted a film record of construction of the Tech Center. so I had a 16mm camera mounted nearby and set to expose a frame occasionally to create a slow-motion record of the erection of this unique building. I have forgotten the name of the fellow that told me he had the film. I would be delighted if this person would contact me, so I can perform conservation on the film and perhaps exhibit it at a future Tek Reunion. If anyone

is aware of who has this film please contact me at: 503-244-6049

**Evelyn Marsh** – Many friends, family and previous co-workers attended an 80<sup>th</sup> Birthday Party for Evelyn Marsh given by her daughters. Good times, good food and lots of reminiscing transpired. There were approximately 70 in attendance. Evelyn wants to thank all who came and tell them how much she appreciates their friendship and attendance. Pictures are included with online TRN.

## Editorial

*By: Louis Sowa*

There is a great article about KBPS radio in this issue. Jim Richardson provided a lot of material, far more than enough for the TRN. To do justice to the subject, there are pictures on the Web site, [www.tekretirees.org](http://www.tekretirees.org). Also, for those of you who are really interested in the subject there is a picture essay of the KBPS upgrade project under the “Photo” section of the Web site. It is my expectation that the material presented in this issue is adequate for most people. I anticipate that almost everyone with specific interest in the KBPS radio project will have internet access. If you have comments, positive or negative, feel free to let me know.

We were not enthusiastic about the need to contact various entities to change your address (see page 1). Unfortunately we have no influence in the matter.

Notice under the calendar items on page two that there is an added item, PCB Design Old Timers Luncheon.

Due to copyright issues it is difficult to present some articles in the manner desired. The “Living to be 100” article is a case in point. On the other hand original material from retirees such as the Community Radio article and the Elder hostel article are preferred. We have been very fortunate to have received quality articles from you – so keep them coming.

The 55 Alive classes have been very popular so we are planning another class in April. The February issue of the TRN will have more information.

## Get your Newsletter Online

A number of retirees are now getting their newsletter from our Web site.

[www.tekretirees.org](http://www.tekretirees.org).

If you would like to join them send an email to Millie Scott at:

[mlscott@easystreet.com](mailto:mlscott@easystreet.com)



## **Evelyn Marsh's 80<sup>th</sup> Birthday Party**





# Photos of the KBPS Project

See Photos page on this site for more

