



In a single month Tektronix Field Engineers in the United States and Canada will make more than 25,000 calls on Tektronix Customers. Over one third of these calls are requested by people who have come to know and rely on the competence and readiness of these Field Engineers to provide many kinds of valuable assistance—without charge.

These men are carefully chosen and trained to have the qualifications we think you would prefer to find in people who represent Tektronix. Basically they are oscilloscope-instrumentation experts who believe, as Tektronix does, that by being concerned with your needs first, our long-term interests are best satisfied.

If you are not already fully acquainted with the kind of help your Tektronix Field Engineer offers, please read on

REVISION 1907-01-020

THE FOLLOWING INFORMATION IS FOR INFORMATION ONLY

AND IS NOT TO BE USED FOR ANY OTHER PURPOSE



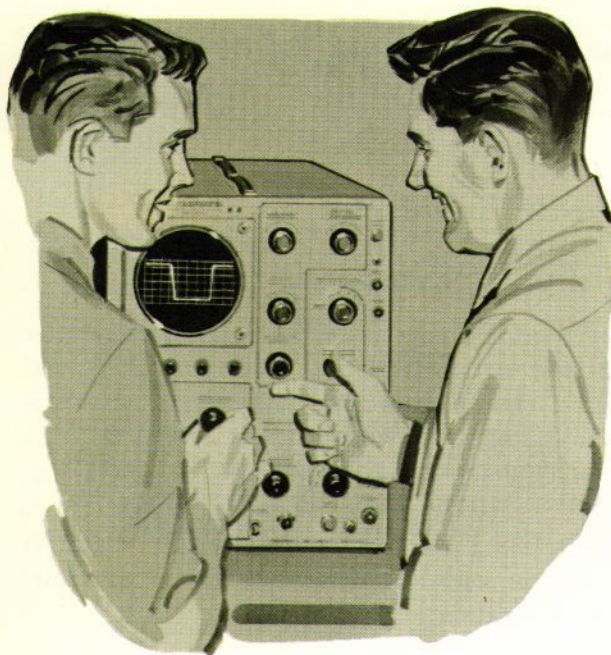
THIS IS A COPY OF THE ORIGINAL DOCUMENT AND IS NOT TO BE USED FOR ANY OTHER PURPOSE

OSCILLOSCOPE OPERATION

**Your Tektronix Field Engineer is expert
at solving operational problems**

WHAT'S THIS KNOB FOR?

When an oscilloscope is being used in some of the less exacting of its numerous applications, it may seem to be equipped with an excessive number of controls. This profusion of controls can be quickly cleared up by your Tektronix Field Engineer. By demonstrating oscilloscope use in various applications, he'll help you become more proficient, and you'll be on your way to enjoying all the usefulness that Tektronix engineered into your instrument.



POST-GRADUATE REVIEW

A few moments spent going over your oscilloscope controls and their functions with your Tektronix Field Engineer can pay off. He will be certain that you are getting the most benefit with the least effort. Next time he visits you, make sure you are operating your instrument the easy way in all your applications.



GROUP INSTRUCTION

When a Tektronix Oscilloscope is to be used by several people, or when several new oscilloscopes are received at about the same time, your Tektronix Field Engineer will be happy to conduct an informal class on oscilloscope operation. Time his class for as soon after delivery as possible, and include in the group all who are to use the instrument. This insures maximum oscilloscope usefulness...right from the start.

OSCILLOSCOPE APPLICATIONS

Use the training and experience of your Tektronix Field Engineer



EVERYDAY UTILITY

Many routine checks and measurements can be performed with greater ease and more accurately with the aid of your oscilloscope. Information presented in the form of a cathode-ray-tube display is often more enlightening than a collection of inanimate figures. Discussing measurement techniques with your Tektronix Field Engineer can be profitable. He could have the very idea that will help you get better answers in less time.

SPECIFIC TASKS

When you have a job that's a little different, and you can't quite see how your oscilloscope ties into it, call your Tektronix Field Engineer. He'd like a try at saving you some time and effort. If there is a tie-in between your work and your oscilloscope, the connection is probably filed between his ears. It will very likely pop out as he becomes aware of the circumstances.

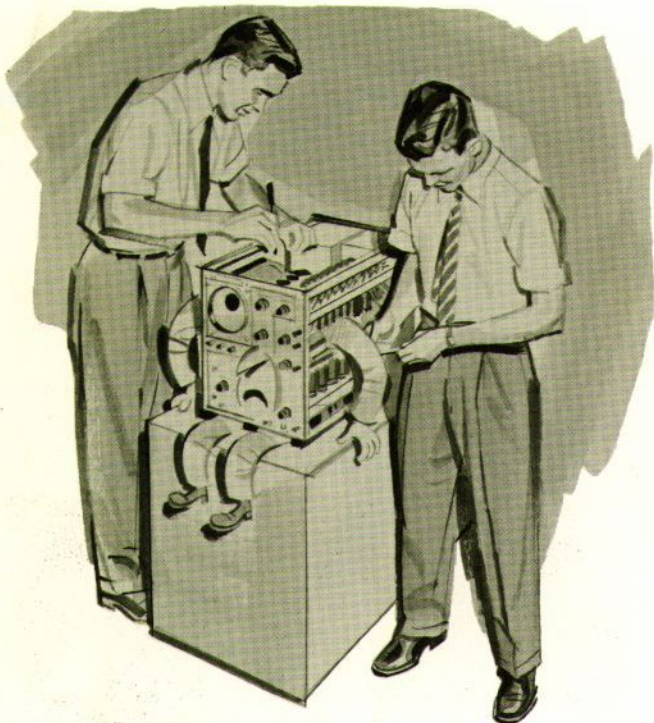
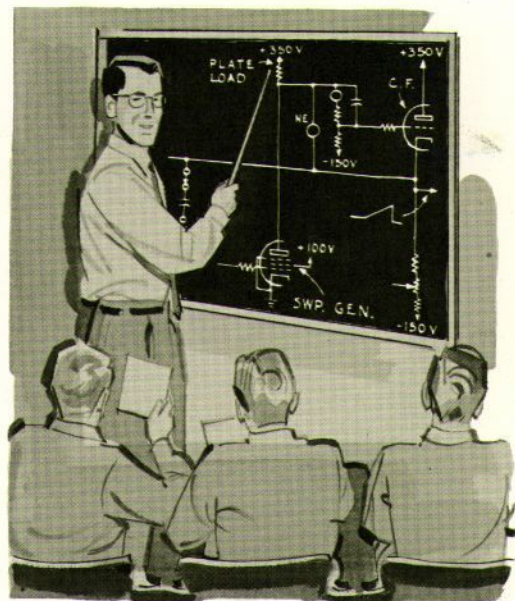


OSCILLOSCOPE MAINTENANCE

... with an assist from your Tektronix Field Engineer

MAINTENANCE INSTRUCTION

Instrument maintenance activities can benefit from the Field Engineer's thorough knowledge of Tektronix Oscilloscopes. He's available by appointment to conduct informal classes on maintenance, test and calibration procedures, and trouble-shooting techniques. And he's your best source of information on modification notes, kits, improved construction techniques and circuitry. He or his secretary can hurry things in an emergency by arranging speedy shipment from the factory on those replacement parts not normally stocked in Field Offices.



THE REJUVENATION PROCESS

Reconditioning of your older Tektronix Oscilloscopes is practical if the reconditioned instrument will meet your performance requirements. The cost is small—in comparison to the cost of a similar new instrument.

Reconditioning oscilloscopes is the sole function of a group of highly-skilled repair station technicians. They almost completely rebuild the instrument, incorporating all feasible major modifications that improve performance and dependability, and check it out against current standards. The finished product is a clean, good-looking instrument that may perform better than when you originally purchased it. Ask your Tektronix Field Engineer about this service for Tektronix customers.

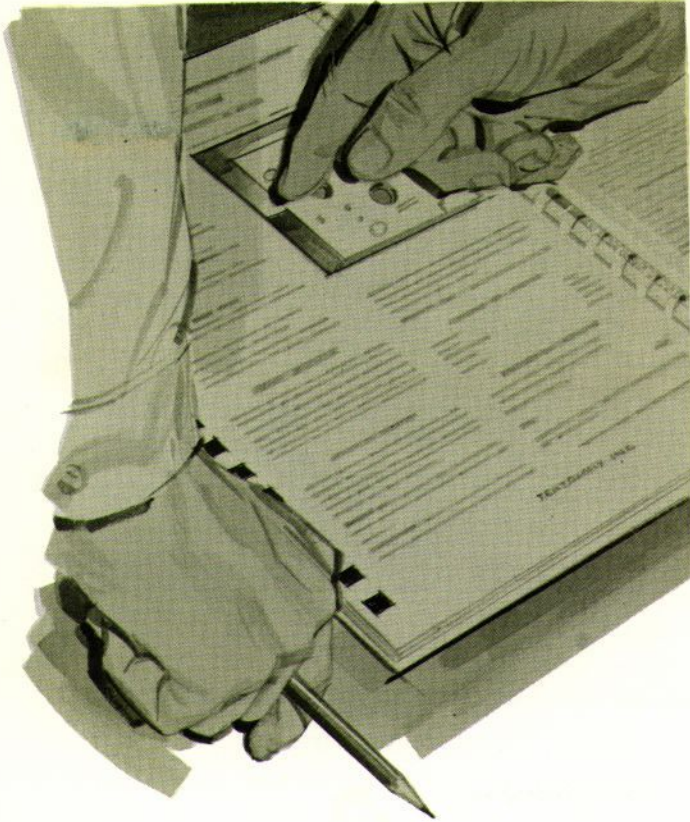
FIELD REPAIR STATIONS

Over one-half of the Tektronix Field Offices house repair stations. These repair stations are strategically located throughout the U.S. and Canada and are manned by highly-skilled, factory trained Field Maintenance Engineers.

When it is impractical for you to have a repair and maintenance section of your own, or when deemed advisable by your Tektronix Field Engineer, these repair stations are available for repairing, maintaining, modifying, and reconditioning of your Tektronix equipment.

SELECTING AN OSCILLOSCOPE

Take advantage of your Tektronix Field Engineer's product knowledge



PURCHASING DETAILS

There are many types of oscilloscopes...from the versatile general-purpose oscilloscope to the highly specialized instrument. Your Tektronix Field Engineer can help you make the best possible investment by recommending the oscilloscope best suited for your present and future needs. He will be happy to back up his recommendation with an actual demonstration of the instrument in your application. But he will not hesitate to recommend some other method of attacking the problem if it appears to meet your requirements more efficiently.

THE CORRECT TOOL

If you are a Purchasing Agent or Buyer; you need information on prices, terms, shipping estimates, warranties, replacement parts, and best method of transportation on instruments and parts. Your Tektronix Field Engineer will gladly furnish whatever information you need to help ease your work. And he won't bother you with technical specifications unless you ask for them. Incidentally, he is aware that you know what's going on in your Company, and would appreciate your showing him around.

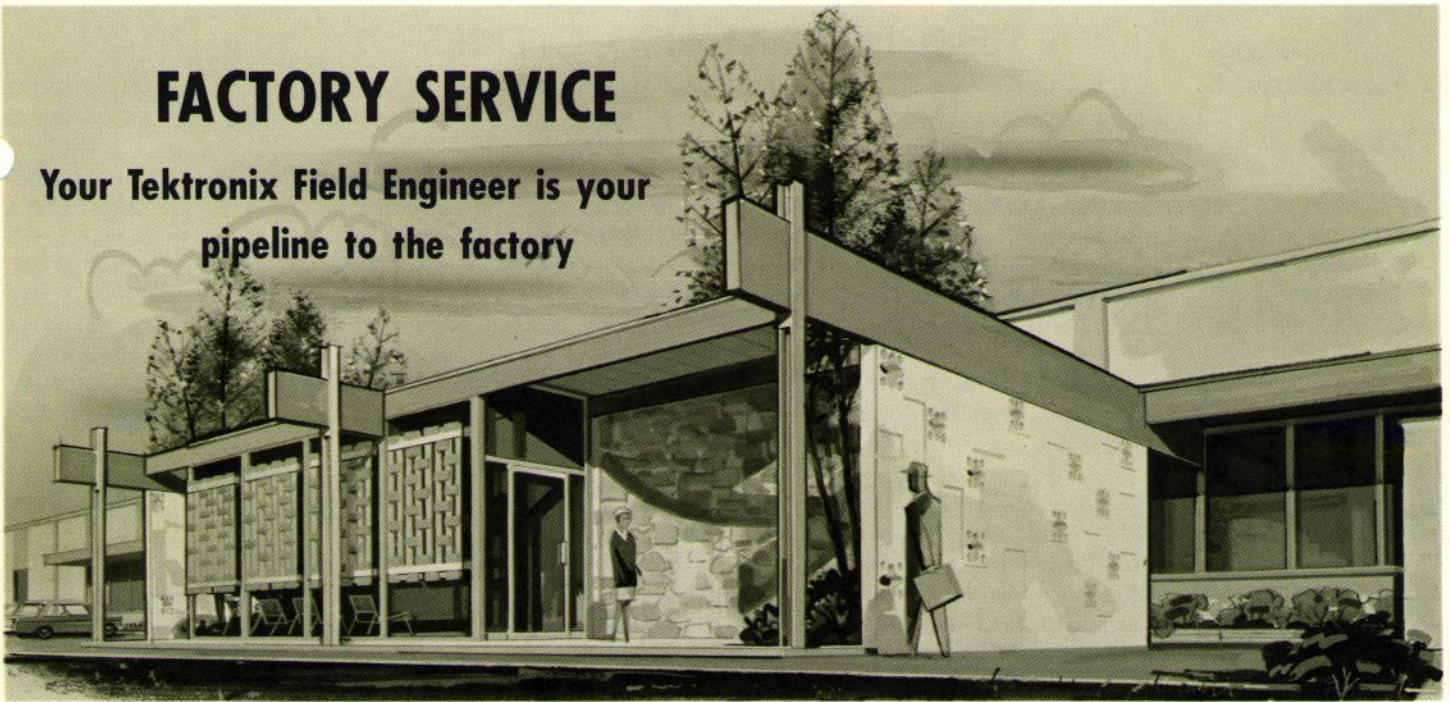


FOLLOW-UP

The value of your oscilloscope is greatest when you are able to realize its full potential. If your choice is a Tektronix Oscilloscope, your Tektronix Field Engineer is available to help you achieve maximum utility. Look to him for any kind of assistance with any Tektronix Instrument...anytime.

FACTORY SERVICE

**Your Tektronix Field Engineer is your
pipeline to the factory**



GOOD CONNECTIONS

When fast service from the factory on any problem related to your Tektronix Instruments is important to you, tell your Tektronix Field Engineer. He knows the person to contact and can reach that person quickly and easily. He gets fast results. The headquarters staff knows the importance of prompt service. Your Tektronix Field Engineer can call on anyone, from the company president on down, to help with your problem.

SPECIAL SERVICES

If you are responsible for the maintenance of a large quantity of Tektronix Instruments, ask your Field Engineer about the detailed factory training course in maintenance and calibration. Many companies have sent their instrument-maintenance personnel to Portland for this free course, and have been pleased with the results. Your Tektronix Field Engineer will be happy to set up a factory training course for you if your company approves. He's your best source of information on this program and anything else related to Tektronix Instruments.



CLOSING THOUGHT

Because there just aren't very many men with both the inclination and the special qualifications necessary in this exacting profession, your Tektronix Field Engineer is spread pretty thin. But somehow he'll manage to be on hand when you really need him. Your understanding and cooperation insures a successful, satisfying relationship with Tektronix. . . . through your Tektronix Field Engineer.

TEKTRONIX, INC.

FIELD ENGINEERING OFFICES

- **ALBUQUERQUE** 509 San Mateo Blvd. N.E., Albuquerque, New Mexico TWX: AQ 96 AMherst 8-3373
Southern New Mexico Area: Enterprise 678
- **ATLANTA** 467 Armour Circle, N.E., Atlanta 9, Georgia TWX: AT 358 873-5708
Huntsville Alabama Area: WX2000
- **BALTIMORE** 724 York Road, Towson 4, Maryland TWX: TOWS 535 VALley 5-9000
- **BOSTON** 442 Marrett Road, Lexington 73, Massachusetts TWX: LEX MASS 940 VOLunteer 2-7570
- **BUFFALO** 961 Maryvale Drive, Buffalo 25, New York TWX: WMSV 2 NF 3-7861
- **CHICAGO** 400 Higgins Road, Park Ridge, Illinois TWX: PK RG 1395 TALcott 5-6666
- **CLEVELAND** 1503 Brookpark Road, Cleveland 9, Ohio TWX: CV 352 FLorida 1-8414
Pittsburgh Area: ZEnith 0212
- **DALLAS** 6211 Denton Drive, P. O. Box 35726, Dallas 35, Texas TWX: DL 264 FLEetwood 7-9128
- **DAYTON** 3601 South Dixie Drive, Dayton 39, Ohio TWX: DY 363 AXminster 3-4175
- **DENVER** 2120 South Ash Street, Denver 22, Colorado TWX: DN 879 SKYline 7-1249, 7-1240
Salt Lake Area: Zenith 381
- **DETROIT** 27310 Southfield Road, Lathrup Village, Michigan TWX: SFLD 938 ELgin 7-0040
- **ENDICOTT** 3214 Watson Blvd., Endwell, New York TWX: ENDCT 290 Ploneer 8-8291
- **GREENSBORO** 1838 Banking Street, Greensboro, North Carolina TWX: GN 540 274-4647
- **HOUSTON** 2605 Westgrove Lane, Houston 27, Texas TWX: HO 743 MOhawk 7-8301, 7-8302
- **HONOLULU** Kentron Hawaii, Ltd., 1140 Waimanu Street, Honolulu 14, Hawaii Telex: MHU 0093 Phone: 53975
- **INDIANAPOLIS** 3937 North Keystone Ave., Indianapolis 5, Indiana TWX: IP 361X Liberty 6-2408, 6-2409
- **KANSAS CITY** 5920 Nall, Mission, Kansas TWX: KC KAN 1112 HEdrick 2-1003
St. Louis Area: ENterprise 6510
- LOS ANGELES AREA**
 - **EAST L. A.** 5441 East Beverly Blvd., East Los Angeles 22, California TWX: MTB 3855 RAYmond 3-9408, 3-9409
 - **ENCINO** 17418 Ventura Blvd., Encino, California TWX: VNYS 5441 STate 8-5170
 - **PASADENA** 1194 East Walnut Street, Pasadena, California TWX: PASA-CAL 7219 449-2164
 - **WEST L. A.** 11681 San Vicente Blvd., West Los Angeles 49, California TWX: WLA 6698 GRanite 3-1105
From Los Angeles telephones call: BRadshaw 2-1563
- MINNEAPOLIS** 3307 Vera Cruz Ave. North, Suite 102, Minneapolis 22, Minnesota TWX: MP 983 533-2727
- MONTREAL** 3285 Cavendish Blvd., Suite 160, Montreal 28, Quebec, Canada HUnter 9-9707
- NEW YORK CITY AREA**
 - **NEW YORK CITY AND LONG ISLAND** 840 Willis Avenue, Albertson, L. I., New York TWX: G CY NY 1416 Ploneer 7-4830
 - WESTCHESTER COUNTY, WESTERN CONNECTICUT, HUDSON RIVER VALLEY** 1122 Main Street, Stamford, Connecticut TWX: STAM 350 DAVis 5-3817
 - **NORTHERN NEW JERSEY** 400 Chestnut Street, Union, New Jersey TWX: UNVL 82 MURdock 8-2222
- **ORLANDO** 205 East Colonial Drive, Orlando, Florida TWX: OR 7008 GARden 5-3483
(also serves Puerto Rico)
- **PHILADELPHIA** 7709 Ogontz Ave., Philadelphia 50, Pennsylvania TWX: PH 930 WAverly 4-5678
- **PHOENIX** 7000 E. Camelback Road, Scottsdale, Arizona TWX: SCS DL 52 WHITney 6-4273
- **PORTLAND** P. O. Box 500, Beaverton, Oregon TWX: BEAV 311 MItchell 6-1926
- **POUGHKEEPSIE** 8 Raymond Avenue, Poughkeepsie, New York TWX: POUGH 5063 GROver 1-3620
- **SAN DIEGO** 3045 Rosecrans Street, San Diego 10, California TWX: SD 6341 ACAdemy 2-0384
- SAN FRANCISCO BAY AREA**
 - **LAFAYETTE** 3530 Golden Gate Way, Lafayette, California TWX: LAF CAL 1639 YELlowstone 5-6101
From Oakland, Berkeley, Richmond, Albany and San Leandro: CLifford 4-5353
 - **PALO ALTO** 3944 Fabian Way, Palo Alto, California TWX: PAL AL 112 DAVenport 6-8500
- SEATTLE** 236 S.W. 153rd St., Seattle 66, Washington TWX: SE 47 CHerry 3-2494
- **SYRACUSE** East Molloy Road and Pickard Drive, P. O. Box 155, Syracuse 11, New York TWX: SS 423 GLenview 4-2426
- **TORONTO** 4A Finch Ave. West, Willowdale, Ontario, Canada Toronto, 225-1138
- **WASHINGTON, D.C.** 4205 Evergreen Lane, Annandale, Virginia TWX: F CH VA 760 256-6700
Norfolk, Portsmouth, and Hampton, Virginia Area: Enterprise 741

• ALSO REPAIR CENTERS

Tektronix, Inc., an Oregon Corporation, Home Office & Factory, P. O. Box 500, Beaverton, Oregon
Telephone: MItchell 4-0161 TWX—311 Cable: TEKTRONIX