

A DEDICATION

August 14, 1987 — 1 p.m.

Howard Vollum Park
and
Memorial Garden

Program

Master of Ceremonies: Paul Carlson

Introduction of honored guests.....Paul Carlson

Welcome to guests and employees.....Earl Wantland

Presentation of the Memorial Garden:

Providing a place for continuing memorial
to Howard and dedicated in his name

to the future of Tektronix.....Earl Wantland

Presentation of the Technical Center Lobby:

A display of history and progress.....Wim Velsink

Presentation of Anthology of Remembrances..Area Rep Panel

Presentation of State of Oregon's
Memorial to Howard.....Nancy Ryles

Recognition of designers, architectural,
contractural firms and facilities staff.....Paul Carlson

Acknowledgment for the Family.....Jean Vollum

Closing Comments.....Paul Carlson



Employees, friends remember Howard

When Area Rep Panel Members asked for personal anecdotes and recollections about Howard Vollum earlier this year, they didn't anticipate the volume of responses from employees, retirees, spouses and even vendors.

By last month's deadline, some 100 stories, impressions and observations about Howard were in hand as the Panel set about to compile them into an anthology of remembrances, which will be given today to Jean Vollum and their sons.

The 8 x 8 1/2" book contains more than 80 pages of memories, stories and comments from people who knew Howard.

It is simply titled, "An Anthology dedicated to Howard Vollum, a man of quiet genius."

Julie Stark, who directed the Panel project, said the collection of comments are "sincere, genuine and sprinkled with words of admiration about a man who gave so much to so many."

Technology Communications Support provided editorial, typesetting and graphic support for the anthology. Hardcover copies have been prepared for Howard's family and relatives and additional paperback copies for friends and associates.

Here is a sampling of the memories:

Not His Character: "In 1979, Charles Sporck, president of National Semiconductor, and I were having lunch with Howard and Earl. Howard said he really didn't know how these little black integrated circuits worked, but that he did buy two National audio amplifier ICs from Radio Shack to play with. We had sampled Tek with over 200 of these at no charge. He could have asked me, but that was not his character." — *Charles de Turenne, Quest Marketing, Inc.*

A Fast Learner: "...Larry Bowman had just been with Howard for a couple hours, talking about the IC facility in Bldg. 50. As the meeting opened, Howard was the student asking questions and learning about ICs. As he learned, he asked more in-depth questions. By the end of the session, he was the teacher, leading Larry into the intricacies of IC physics..." — *Deane E. Kidd, New Product Introductions.*

Almost Humble Attitude: "I met Howard for the first time in 1961 while at the Linfield Research Institute...he was interested in our technology for possible CRT applications. I was impressed by his questions, interest in our work, and the almost humble attitude of this outstanding scientist." — *Len Garrett, FDI Regional Sales Manager.*

Birthday Cards: "Until the early 1970s, Howard used to send personal greetings to all employees on their birthday. Howard once mentioned to me that I had a birthday coming up and he had signed the card. When asked if he signed all of the birthday cards that were



Howard Vollum
1913-1986

sent out, Howard replied, "Yes, my secretary makes them up ahead of time and brings them to me in batches. I look at who they're for and sign the cards. For those I know, I hold their cards and reminisce." It was a privilege to know such a fine man." — *Harry Stewart, retiree.*

Pleased and Proud: "When we asked Howard to give a talk at the new engineers orientation in 1983, we were amazed at how pleased and proud he was that we wanted him to speak. He treated the committee members with the same respect that he would treat high-ranking officers." — *Paula Mossaide, GWD Software Manager.*

Howard Sat Here: "Howard didn't have a special parking place at work and sometimes couldn't remember where he parked. An employee offered to help him and he climbed into a small pickup where they looked up and down the lot, finally locating the vehicle. When Howard departed, the employee placed a sign in his pickup. It read, 'Howard Sat Here.'" — *Cathy Fluery, retiree.*

Patron of the Arts: "Not only was Howard a patron of the three-dimensional arts, he was also very well versed in the field. I remember his passion for art, especially sculpture. He took real pleasure in explaining the methods used in quarrying marble at the site in Italy where Michelangelo's marble came from." — *Charlie Kreth, project manager.*

Senate Concurrent Resolution 5

Whereas Howard Vollum, businessman, scientist, philanthropist and humanitarian who contributed to the State of Oregon in innumerable ways died February 3, 1986, in St. Vincent Hospital, Portland, Oregon, one of the institutions which benefited from his special vision both in contributions and from his position on its board of directors; and

Whereas Howard Vollum contributed to the economic growth of the region by helping found a company in 1946, Tektronix, Inc., whose current employees number 17,000, and whose annual sales figures total \$1.4 billion; and

Whereas he received many awards associated with his electronics career, including the Legion of Merit with Oak Leaf Cluster while an officer in the United States Signal Corps during World War II; the Morris Leeds Award, Institute of Electrical and Electronic Engineers; the Howard N. Potts Award from the Franklin Institute in Philadelphia; the Oregon Pioneer Award from Associated Oregon Industries and was elected to the National Academy of Engineering in 1977, the highest professional distinction to be conferred on an engineer; and

Whereas the Glenn Jackson Leadership Award from Willamette University, the Distinguished Service Award in the field of Human Relations from the National Conference of Christians and Jews, and the Humanitarian Award from the Ecumenical Ministries of Oregon were among the honors he received for humanitarian philanthropies and activities; and

Whereas he generously contributed, often anonymously, to countless institutions, including Reed College, Oregon Health Sciences University, Oregon Graduate Center, St. Vincent Hospital, the Oregon Symphony and the Oregon Center for Advanced Technology Education; and

Whereas he built a library at Mt. Angel Abbey and left a grant to Oregon Museum of Science and Industry enabling it to establish a new location on Portland's waterfront and also donated land for the Oregon School of Arts and Crafts; and

Whereas his foresight led to the partnership called Sony-Tektronix, now more than 20 years old, and his entrepreneurship and encouragement contributed to many businesses in the community tracing their roots to Tektronix; and

Whereas his influence led to the establishment of the Tektronix Foundation, which donates millions of dollars each year to worthy causes...industry-related, educational and charitable; and

Whereas throughout his career, Howard Vollum sat on the board of directors or trustees of numerous financial, educational, medical and business institutions, providing them with his knowledge and wisdom; now, therefore,

Be It Resolved by the Legislative Assembly of the State of Oregon:

That we, the members of the Sixty-fourth Legislative Assembly, honor the life and years of public service of Howard Vollum; and be it further

Resolved, That copies of this resolution be presented to his widow Jean and sons, Charles A., Stephen H., Lawrence W., Daniel J. and Donald A.



The garden: a setting of natural beauty

Dedication of the Memorial Garden today in front of corporate headquarters in Bldg. 50 provides a continuing memorial to Tek co-founder Howard Vollum.

Designed by Larry Underhill, award-winning landscape architect and close friend of the Vollum family, the garden exemplifies Howard's interests in natural beauty and artistic design, his commitment to excellence, affinity for people, humility and compassion.

Larry, project manager Barry Goringe and Cooper Consultants kept this in mind as they placed key elements and landscaping in the two

islands along Karl Braun Drive.

The memorial includes a flagpole and special plaque ("Dedicated to Howard Vollum, a man of quiet genius") on the smaller island to the west and a park-like setting on the main island.

On the main island are a pond, bridge, walkways (which tie the park to the street and surrounding structures), 16-foot-tall water fountain, a covered seating area, special lighting and detailed landscaping.

Larry says many of the plants and trees in the memorial garden were favorites of Howard and most varieties can be found at the Vollum home

on N.W. Skyline Blvd. in Portland. They include English Fuji cherry, Japanese maple (burgundy), Colorado weeper (silvery blue), Chinese dogwood, rhododendrons, azaleas and many dwarf plants.

Larry also did the landscaping on the Vollum property and the courtyard at Bldgs. 50-55-58 in 1978-79, winning awards from the American Institute of Landscape Architects (AILA) for both projects.

Planters, enhanced lighting and a handicap-access ramp lead to the front entrance and remodeled lobby of the Technical Center.

Remodeled lobby: functional, historical

Displays in the visitors' area of the newly remodeled lobby at the Technical Center (Bldg. 50) focus on Howard Vollum and his contributions to the company.

There are quotes and photos of Howard and co-founder Jack Murdock; a model of the first Tektronix oscilloscope; a company time-line (1945-present) in photos, and a cast iron bust of Howard by the late Frederick Littman, Portland sculptor.

Littman, a prominent sculptor in the local art community for 40 years, was a neighbor of the

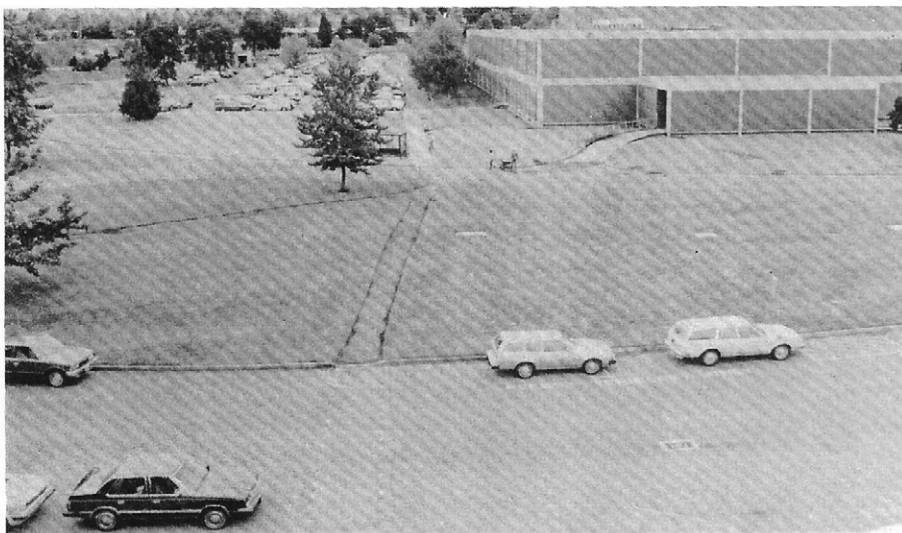
Vollums in N.W. Portland and taught art at Reed College and Portland State University before his death in 1979. Many of his sculptures are displayed throughout the Northwest, including the Portland Art Museum.

The lobby display area also depicts Tek's involvement in people activities — Area Rep Activity, United Way. There is also an honor roll of patent holders, videotape about Tek, and a setting for the display of Tek products.

The visitors' area was designed by Howard Meehan and produced by Design Productions of

Portland. Howard Meehan also made the glass panels (designs from silicon chips) for the double doors to a new conference area off the lobby.

Vendors' cubicles equipped with phones, enlarged reception counter with Tek graphic terminals, and general seating complete the new lobby area, giving a new up-to-date and functional look to the entrance of corporate headquarters. Carol Kooistra presided over the design of the project with Dennis Hadley as construction coordinator and Edelman Associates, interior designer.



June 4



June 11



June 18



June 25



July 2



July 9



July 16



July 23



July 30