

BE THINKING OF
A NAME FOR
THIS
PUBLICATION

VOL. I, NO. I

MAY, 1951

THIS IS YOUR PAPER!!!

The purpose in putting out a publication of this nature is mainly to print information of mutual interest to all of us. Therefore, it will be everyone's privilege to voice any helpful opinions which will benefit the whole.

There will be a box placed in a convenient location to enable you to contribute your material. Contributions will be welcome, telling of meetings, group parties, tournaments etc.

The regularity of issuing this paper will be determined at some later date.

HISTORY OF TEKTRONIX

Several months after the conclusion of World War II, in the year 1945, Howard Vollum, Jack Murdock, Miles Tippery and Glenn McDowell, began the establishment of Tektronix, Inc. Although Milton Bave was one of the founders, he was not available for work until the following year.

Since material and equipment was still scarce it was thought that a retail radio sales and service operation might provide some immediate revenue to help sustain the long and expensive development program of the Type 511 Oscilloscope.

After about a year of continuous development work by Howard Vollum, during which time the present building was designed and constructed, Hawthorne Electronics was established.

By the early part of 1948 production had started on the Type 511, and

it had become apparent that both Hawthorne Electronic and Tektronix, Inc. were full time activities which would operate better separately. About this time Glenn McDowell took over the operation of Hawthorne Electronics as a separate business no longer affiliated with Tektronix, Inc.

Also during early 1948, Logan Belleville, who was a development engineer at U.S. Forest Service Radio Lab., joined with the owners of Tektronix, and has since contributed much to our overall instrument development activity.

Our first year of operation 1947, in the present building was lean and difficult. The entire production facilities were all located in the present assembly and wiring room, with the shop equipment in the same room along the east wall. The people already

mentioned were alternately doing parts of several jobs; sales, purchasing, accounting, and production. In addition to these folks, the entire production force on Jan. 1, 1948 consisted of Lowell Hadley, Howard Gault, John Rieschel, Don Tweedie, John Larson, Lee Penson, Ken Walling and Grace Gasser. During January, Fay Holliday and Kate Probstfield were added, and Les Purcell in February.

At this time the rest of the building was sub-leased to several organizations. Hawthorne Electronics occupied the entire ground floor. The south section of the upper floor was divided amongst four firms; The Engineering Clinic, Neely Enterprises, (Portland branch office then operated by Dal), The Osborne Co. and Graham Transfer.

As Tektronix Oscilloscopes were gradually delivered to the various laboratories throughout the country our reputation grew. Though our production capacity has continuously increased, the incoming orders have increased even faster.

We can now all be proud of not only a world wide acceptance, but also of being the acknowledged leader in the laboratory oscilloscope business of this country.

* * *

RECORD ATTENDANCE AT NEW YORK I.R.E. TRADE EXHIBIT

Each year the Institute of Radio Engineers holds its National Convention in New York City. In addition to technical information meetings the convention activity includes the largest of the annual electronic trade exhibits.

Tektronix has been a regular exhibitor since 1947 and for the past two years have held forth at the same booth location - No. 234, and No. 235.

One of the greatest advantages to be gained from Trade Show participation is the opportunity it provides for members of our engineering department

to meet with the actual users of our products, discuss application problems at first hand, absorb constructive criticism and, in general, to "feel the pulse" of the industry.

The 1951 Exhibit opened at the Grand Central Palace, 47th St. and Lexington Ave., New York City on Monday, March 19, 1951, closing four days later. At the close of the third day the registered attendance had been somewhat over 20,000 and the total attendance was later estimated at approximately 23,000.

Tektronix personnel in attendance were, J.J. Cassidy Jr., Ed Bauder and Margaret Johnson, all of the Tektronix N.Y. office, in addition to Dick Ropiequet, Bob Davis, Howard Vollum and Dal from Portland Headquarters office.

Additional information about Tektronix overall merchandising policy and activity will be included in later issues of this publication.

* * *

A flea and an elephant walked side by side over a little bridge. Said the flea to the elephant after they were on the other side "Boy, we sure did shake that bridge."

* * *

Every comedian believes in gags, -- unfortunately however, very few of them wear them.

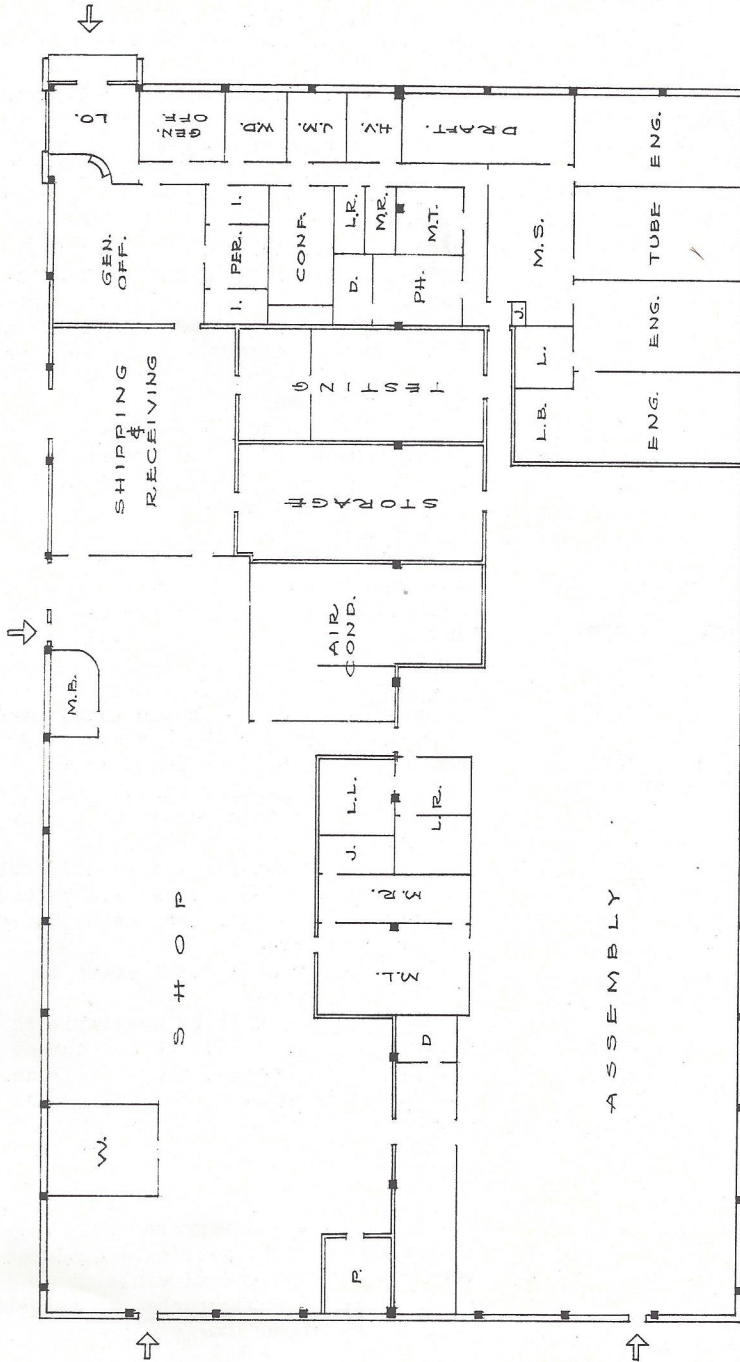
* * *

Whistler, the artist, had a French poodle of which he was extravagantly fond. When the dog was seized with a throat ailment, Whistler had the audacity to send for a great throat specialist, Mackenzie.

Mackenzie upon seeing that he had been summoned to treat a dog, felt incensed, but said nothing. He prescribed and went away.

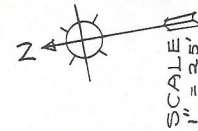
The next day he sent in post haste for Whistler to come to his house, and Whistler thinking it had something to do with his beloved dog, rushed to the home of the specialist.

On his arrival, the man said gravely "I wanted to see you about painting my front door."



L E G E N D

- | | | | |
|-----------|---------------------------|------|-------------------------|
| AIR COND. | — AIR CONDITION EQUIPMENT | M.S. | — MODEL SHOP |
| CONF. | — CONFERENCE ROOM | MT. | — OFFICE, MILES TIPPERY |
| D. | — DARK ROOM | P. | — PAINT SHOP |
| DRAFT. | — DRAFTING | PER. | — PERSONNEL OFF. |
| ENG. | — ENGINEERING & RESEARCH | PH. | — PHOTOGRAPHY LAB |
| GEN. OFF. | — GENERAL OFFICES | TUBE | — TUBE RESEARCH |
| H.V. | — OFFICE, HOWARD VOLLUM | W. | — WELDING |
| I. | — INTERVIEW ROOMS | WD. | — DAL'S OFFICE |
| J. | — JANITORS SUPPLIES | | |
-
- | | |
|------|-------------------------|
| JM. | — OFFICE, JACK MURDOCK |
| L. | — LIBRARY, JACK MURDOCK |
| L.B. | — LOGAN BELLEVILLE |
| L.L. | — LADIES LOCKER R.M. |
| L.R. | — LADIES REST R.M. |
| LO. | — ENTRANCE LOBBY |
| MB. | — OFFICE, MILTON BAYE |
| ML. | — MENS LOCKER R.M. |
| MR. | — MENS REST R.M. |



NOTES OF INTEREST ABOUT NEW BLDG.

1. Well insulated from outside weather conditions by the materials employed. These include double glazed windows of heat absorbing glass - vermiculite insulating concrete roof - an additional ceiling of vermiculite insulating plaster - tuffstone walls - floor slab insulated around the outer edges with fibre glass to a depth of two feet below grade. In addition the outer perimeter of the floor slab is heated by coils below.
2. Partitions indicated on plan by a double line are firewalls, which divide the building into six fire zones.
3. Generous use of expansion joints on roof, ceiling, floor and steel work to minimize the occurrence of unsightly cracks.
4. Air conditioned throughout, all dust and smoke being removed electrically by a precipitron.
5. Lighting level in each work area carefully engineered for the particular work being done in that area.
6. Tile red concrete floor in entire building. Color scheme carried out for all areas to promote pleasant working conditions and most efficient use of light.
7. Parking lot accomodating approximately 186 cars.

* * *

EMPLOYEES COMMITTEE MEETINGS

The personnel committee was established to improve understanding among all the people at Tektronix. This requires three way communications from employees to management, management to employees, and discussion of mutual problems.

To bring you up to date, here are a few typical subjects discussed by this committee.

1. Group Social Insurance (Health, Life, Accident).
2. Personal use of telephone to be limited to EA . 3027 and to be as brief

as possible.

3. Sick-Pay policy.
4. Vacation Schedule
5. Fire Prevention (Let us help prevent fires!).
6. Individual Tool Boxes for everyone.

Committee Meeting May 16, 1951

O.P.S. (Not office of Price Stabilization). Oregon Physician's Service last week announced a new method of handling hospital cases. Hospital patients will no longer be asked to pay in advance. O.P.S. has now agreed to pay their approximately 90% of the hospital bill directly, thus leaving only about 10% for the patient to settle with the hospital.

State of the Bonus is an item of interest (Dept. of Understatement). Indications are if we ship about 350 scopes this month the bonus will be approximately that of 1950's. It's possible! After inventory has been taken more exact information will be available. (Inventory is a headache and everyone's cooperation will be needed).

Gift Fund It was proposed that a paper be circulated to obtain signatures of those wishing to have their .35¢ monthly contributions taken from their pay-check. A monthly check could then be turned over to a committee to administer.

Excess Pastry Money which is difficult to return to contributors will be used to send a boy or girl to the Salvation Army summer camp.

Moving to new Bldg. will start in about three weeks.

Coats & Aprons will be available to those actually needing them. Aprons are preferred because they cost less.

Picnic to be held on a Sunday. Volunteers who wish to serve on picnic committee can sign paper on bulletin board. (New Bldg. open house and picnic will be separate events).

Name Badges which were recently suggested to expedite getting acquainted were given up as undesirable.

Further use of Photographs was suggested as a better medium.

* * *



**HOWARD VOLLUM
PRESIDENT AND CHIEF ENGR**

ENGINEERING AND YOUR JOB

Will Tektronix be able to maintain enough business when the present emergency period is over to employ its recently enlarged staff? Every effort is being made and will be made in the future to attain this objective. The success or failure of this effort depends to a great extent on the initiative and skill of the Engineering Dept. If they can design instruments which fill a need in the electronic field, Tektronix will have orders and we will have jobs.

One of the interesting features of the electronic instrument business is the part that the customers are usually competent to judge the quality of their purchases. This is quite different from the normal case where the purchaser can only rely on external appearances, the reputation of the manufacturer etc. The ability of the customer to evaluate and judge makes it possible to sell instruments of superior design and construction rather than those making the best advertising claims. This greatly increases the responsibility of the Engineering Dept.

In general, there are three phases in the design of an electronic instrument, first the circuit development, then mechanical development, and finally a combination of the first two, usually known as production engineer-

ing. In some cases the same person or or groups carries through with all three, in other the various phases are done by separate persons. This depends on the talents of the various engineers, the difficulty of the problems, time available etc.

The electrical or circuit design phase is usually known as the "bread-board" stage. Here the various components are connected up in the easiest possible manner with no regard for mechanical consideration. The circuits are now tested for electrical performance and modified when necessary to finally get the desired results. Many times the modifications are so extensive that the final circuit bears little resemblance to the original one.

Next the mechanical design; fitting the many components into a compact functional unit. Here many conflicting conditions must be reconciled. For best electrical results the connecting wires should be short and direct - critical circuits kept away from those carrying large signals, etc. For best mechanical results parts should be solidly mounted wiring kept in cables easy access for servicing should be provided etc. As in all engineering the problem is to make the best possible compromises. One of the outstanding features of Tektronics equipment is the accessibility of the components for service and replacement.

The production engineering phase is concerned with determining permissible mechanical and electrical tolerances making modifications which ease shop problems writing instruction manual, developing test procedures etc. This last phase is the least exciting and in many cases most time consuming, but very important. At the present time a majority of the engineering staff is concerned with production engineering. This is due primarily to the very urgent demand for our most advanced and complicated units the 513, and 517.

Even when the instruments are in steady production the problems of the Engineering Dept. do not cease. Part substitutions must be approved, suggestions and complaints of customers analyzed

and if necessary modifications devised.

From the foregoing it is easily seen that in a technical business such as ours the Engineering Dept. is very much concerned with almost all activities in one way or another. Their decisions have a vital effect on Tektronix business. Let's hope they make the correct ones!!

* * *

NOTICES

Golf Tournament:

Remember the tournament starts on June 1st so -- Get those handicaps in!

(Note: Milt. Bave won last yr.)

* * *

2nd Annual Trout Derby;

Kay Barker has caught the biggest trout so far. Rainbow trout, 18 1/4" , Link River.

Derby ends Oct. 15th !

* * *

CAN IT BE ?

Electronic engineers are people who start out knowing a great deal about very little and go on learning more and more about less and less until they know everything about nothing. Sales engineers start out knowing very little about a great deal and go on learning less and less about more and more until they know nothing about everything.

Women start out knowing everything about everything but end up knowing nothing about nothing due to their association with engineers and salesmen.

* * *

The trouble with a kitten is
THAT
Eventually it becomes a
CAT.

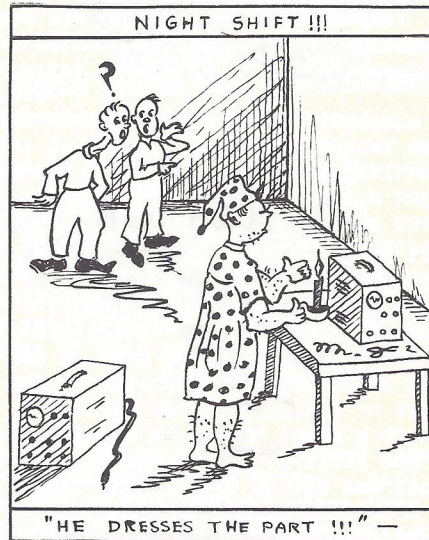
* * *

SALE -- THE CAT'S MEOW!!! -- SALE

Gorgeous - stupenduous - Colossal Part persian, Calico Kittens which are luxuriously furred well bred and possessing exceptional personalities!!!
Contact: Dick Rhiger -- Em. 7124

Paid Advertisement.

* * *



GOLF TEASE

Golf is a game played by placing a small ball 1 1/4" in diameter , on top of a big ball 8000 miles in diameter and trying to knock the small ball off the big ball rather than vice versa.

* * *

Golf Pro to Fitz "The only thing you do wrong is that you stand too near the ball after you hit it".

* * *

Dal: "Jones hit his wife last night".
Milt: "Oh what club did he use?"

* * *

Golf Terms:

Tee: Something not drunk by golfers

Brassie: Worn under the sweater by women golfers.

Stroke: What a dub has when he 1st pars a hole.

Niblick: Club well adapted to hacking cuts in the ball giving it a nibbled look.

* * *