



SOME 30 FIREFIGHTERS were called out at 1:45 a.m. August 3 to quell the blaze which destroyed Grass Valley Group's Administrative Office building. (Photos by John Hart, Grass Valley Union.)



Data saved when fire levels GVG building

GRASS VALLEY — Temporary quarters have been found to house The Grass Valley Group's administrative offices and design engineering quarters which were destroyed by fire on August 3.

Both were housed in a 6000 square-foot, single-story concrete structure known as building no. 1 on Bitney Springs Road near the second entrance to GVG's 325-acre tract.

Tom Long, Grass Valley Group president, said building

plans will be accelerated as a result of the recent fire.

He said the blaze has caused a two to three-month delay in some R&D (research and development) programs, but there were no total losses of information in engineering that can't be developed from information that was either retrieved or boarded elsewhere.

The irretrievable losses occurred in detailed financial and historical data. "We were fortunate to have had a very

recent audit; therefore current operations will not be significantly impaired," Tom added.

Last month's fire also had very

Saturday hours resumed

Tek Country Store resumes its Saturday shopping hours beginning September 17, 10 a.m. to 2 p.m., in The Alaska Bag (68) building on Dawson Way off Cedar Hills Blvd. For information, call Roger Miller, ext. 7208. Come in and see the newly-remodeled display area.

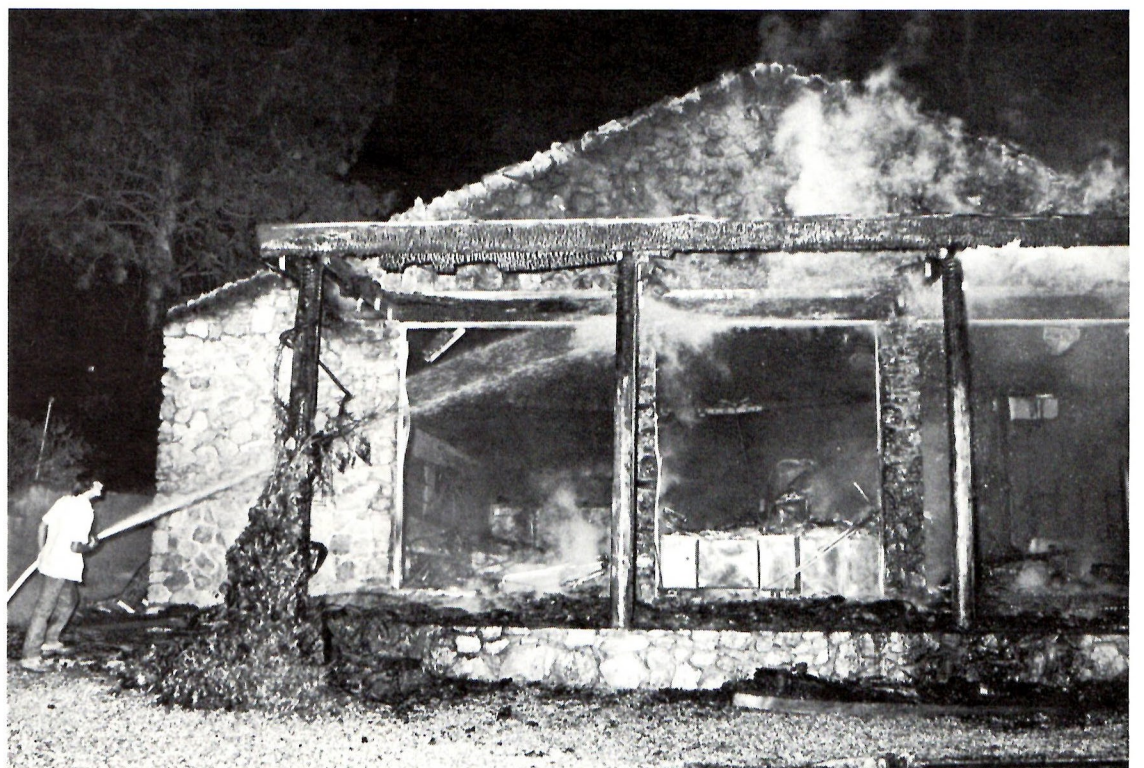
little impact on production output which is housed in other GVG structures.

The fire, of electrical origin, broke out in building no. 1 about 1:45 a.m. on August 3. Nearly 30 firefighters from two fire departments and the California Department of Forestry fought the blaze for over an hour. Mop-up operations continued until dawn.

Grass Valley Group, a Tek subsidiary based here in northern California, is the premier supplier of television switching equipment. It was acquired by Tek in early 1974 and is now a part of the company's Communications Division.



HERE'S HOW the GVC Administrative building looked before the destructive fire.



GRASS VALLEY GROUP'S Building No. 1, which housed administrative offices and design engineering, was totally destroyed during an early morning fire last month. Two nearby fire departments and the California Department of Forestry fought the blaze. (Photo by John Hart of the Grass Valley Union.)