

*Edge of Nevada City*

# GVG obtains 160-acre second site

*AERIAL VIEW of GVG property shows the Golden Center Freeway (top), Seven Hills School (left), and Champion Mine Road (right).*

By ELAINE WILSON  
Editor, GVG Channels

**A**cquisition of Grass Valley Group's second site was finalized February 15 when escrow closed on the purchase of 160 acres on the western edge of Nevada City, an old mining community located a few miles northwest of Grass Valley on Highway 20 in Northern California.

GVG last October agreed to purchase 118 acres from Erickson Lumber Co., but the total acreage was increased after the completion of land surveys and inclusion of about 40 acres known as Deer Creek Environs.

Completion of the purchase agreement was complicated by existence of mining claims on the property which caused problems in locating the boundaries. The affected parcels had to be completely re-surveyed.

GVG intends to dedicate an easement to the 40-acre Deer Creek Environs to Nevada City if annexation is granted, leaving 120 acres suitable for development. Plans are, however, to build on about 15 acres of the property.

Selection of the Nevada City site culminates a four-year watch for a desirable expansion location. The area has major water supply lines and nearby waste water facilities (a primary reason for seeking annexation), of-

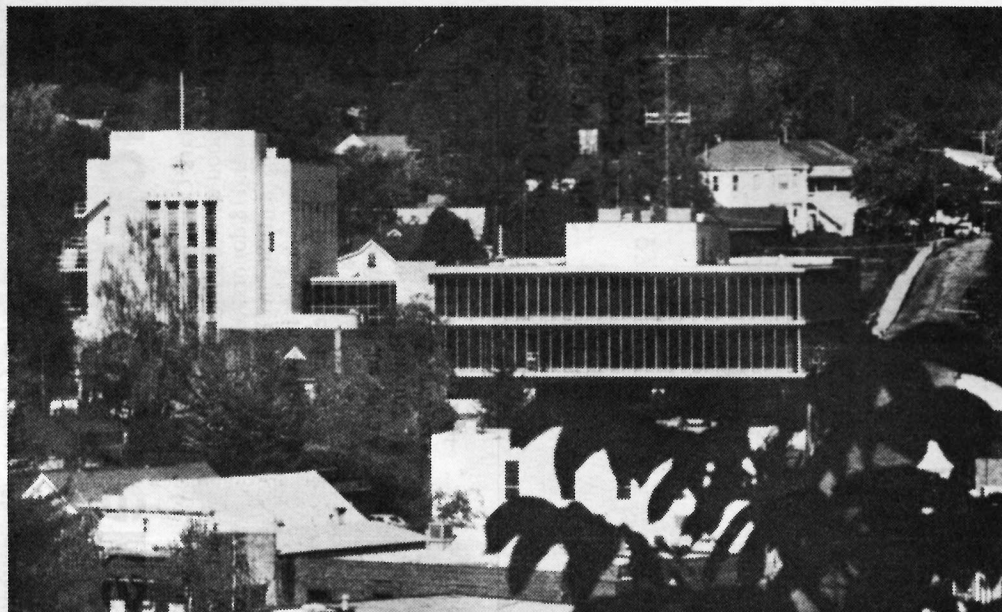
fers easy freeway (Golden Center) access, and is heavily forested, lending itself to the campus-like environment GVG maintains.

GVG hopes its relationship to Nevada City will be mutually beneficial. The site was chosen as the best of several possible expansion sites.

Facilities Planning has begun work on a master site plan which will encompass all construction at the site over an eight-to-ten year period. Five outside firms, well-known for site development in an environmentally sensitive manner, were contracted to submit their ideas for developing the proposed site. Ken Myers (Facilities manager) said construction at the site will begin in about one year.

Initial plans call for the Nevada City site to be developed concurrently with GVG's existing Bitney Springs Road site, where there is still a considerable amount of unused land. Each site will be designed so that neither will ever accommodate more than 2,000 employees. June 1985 is the target date for completion of the first phase. Ken said 200 employees could be employed at the Nevada City site by then.

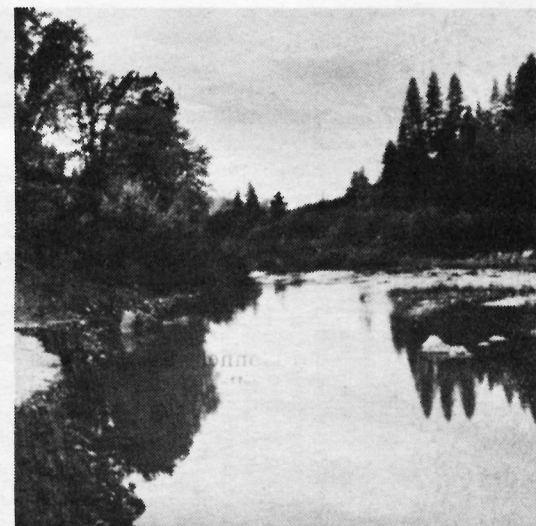
Most likely candidate for relocation to the new property is Grass Valley Group's Modular Products Division, which is presently housed in leased facilities near Nevada



*NEVADA CITY Courthouse from Prospect Hill.*



*FACILITIES MANAGER Ken Myers stands next to a concrete structure from the mining era.*



*DEER CREEK RUNS parallel to the north border of the property.*

County Airpark.

The next step is to file an application with Nevada City for pre-zoning which will "trigger" the need for an environmental impact report (EIR). An EIR will be needed before a zoning change or annexation to Nevada City can be accomplished. Ken says completion of the EIR could take six months.

Grass Valley Group was founded in 1959 as a consulting and research development firm with the design and manufacture of a panoramic sound system for Cinerama as its first major engineering project. Its first video products were used by ABC to televise the 1964 Republican convention in San Francisco, and were officially demonstrated at the 1965 NAB show.

GVG merged with Tektronix in 1974 to provide a broader international marketing organization for its products and to expand Tek's line of television communication products.

In 1981, GVG formed three divisions to focus on each of the major product groups: Production Systems, which manufactures production switching systems; Broadcast Systems, which focuses on routing switchers and custom equipment; and Modular Products, which manufactures a wide range of modular equipment. The company currently has 845 employees in the U.S. and overseas.