

FOUND: "...AN INSURANCE COMPANY WITH OUR WAY OF WORKING"

Wausau Story

at **TEKTRONIX, Incorporated**
Portland, Oregon



Mr. WILLIAM B. WEBBER

A Tektronix Vice President, says:

"We are happy that we chose Employers Mutuals of Wausau as the carrier of our workmen's compensation. We've found they have a fair, friendly and effective way of working with us and our people.

"There are other reasons too. The practical matter of bookkeeping, for example. Because Employers Mutuals is a national company we can simplify records by taking care of our country-wide field offices and our plant at one time.

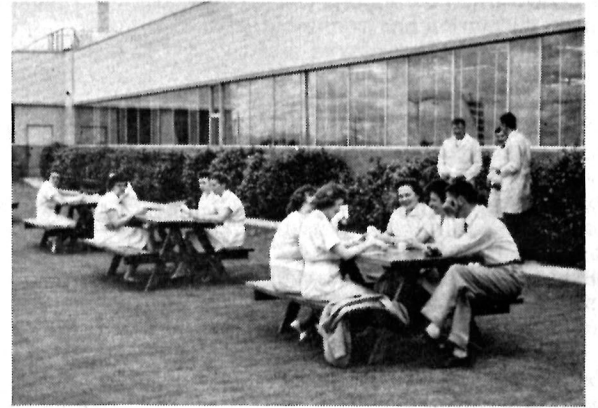
"Then there is the matter of savings—the dividends we can expect through Employers Mutuals' help in eliminating hazards and promoting safe working practices.

"The picture at the right shows one way this works. The gentleman at the left is George Babich, an Employers Mutuals' Safety Engineer. Part of his work with us is serving in an advisory capacity on our employee safety committees. Members of this committee, shown here on a regular safety inspection tour, are E. E. Ashenbrenner, manager of our Fabrication and Moulding Division; Norm Olson, Chairman of our Beaverton plant safety committee; and Lois Addington, head nurse at our plant.

"They're good people, these Employers Mutuals' representatives. Good people to know, good people to do business with."

THERE IS MUCH that is unique about Tektronix, Inc.—their company, their products, their plant, and even their philosophy.

The products developed and produced by this company are cathode-ray oscilloscopes. At the left, Mr. William B. Webber, a Tektronix Vice President, shows us some models of these electronic instruments. Most of us see only an orderly but mysterious complex of knobs, tuners and a screen... but the Tektronix oscilloscope is recognized as a precision tool by the scientists and engineers responsible for advancements in such fields as atomic energy, medicine, electronic control equipment, radar and guided missiles. This tool provides "a picture of changing phenomena," accurately measuring voltage from hundreds of volts to less than a hundred thousandth of one volt and measuring time from minutes to a few billionths of a second.



The Tektronix plant is unique too. The facilities are housed in a group of attractive one and two story buildings, forming an industrial park in a pleasant Portland suburb. Each building is beautifully landscaped with flowering bushes and green lawns, an inviting place for outdoor lunches.

Tektronix people appreciate this atmosphere. It's comfortable and congenial. But more important is the philosophy that guides the way of working; "respect for the dignity of the individual." Here each person assumes responsibility, takes pride in a job well done. Typical is the work of Irene Sherrick, one of the girls in the Unit Wiring Department. Wiring and soldering a unit may take a few minutes or up to ten hours, depending on the complexity of the model.

When the company started operations in 1946, there were ten employees. Today there are over 3000. Turnover is about one eighth the national average for the electronics industry.

★ ★ ★



Why does a company choose one insurance company over another? The reasons vary—even though all workmen's compensation policies are basically the same. The difference is in the interpretation of the printed words of the policy. At Employers Mutuals we interpret policies not by the law alone but also by the ethics, principles and beliefs that have been part of us since the day our company was founded. That's the "Wausau way of working."

Employers Mutuals of Wausau has offices all across the country. We write all forms of fire, group and casualty insurance (including automobile). In the field of workmen's compensation we are one of the largest. We are proud of our reputation for fast claim service and our experience in preventing accidents. Consult your telephone directory for the nearest representative or write us in Wausau, Wisconsin.

Employers Mutuals of Wausau



"Good people to do business with"