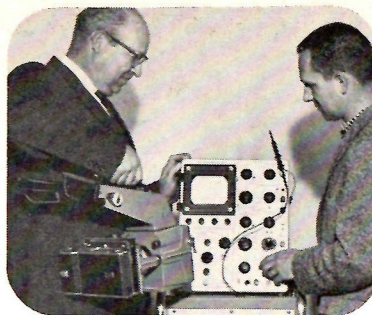
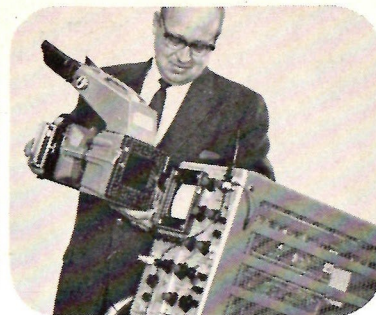




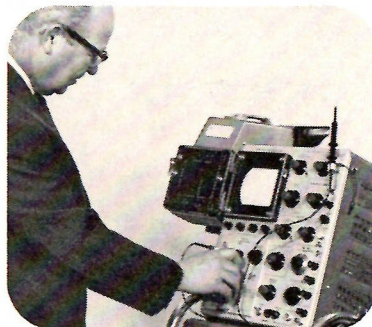
You can do more
with the
**TEKTRONIX
C-12
CAMERA**
than you can with
any other
oscilloscope
camera



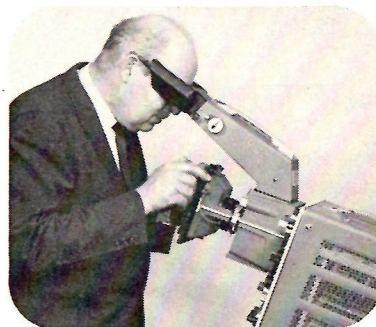
One-hand portability



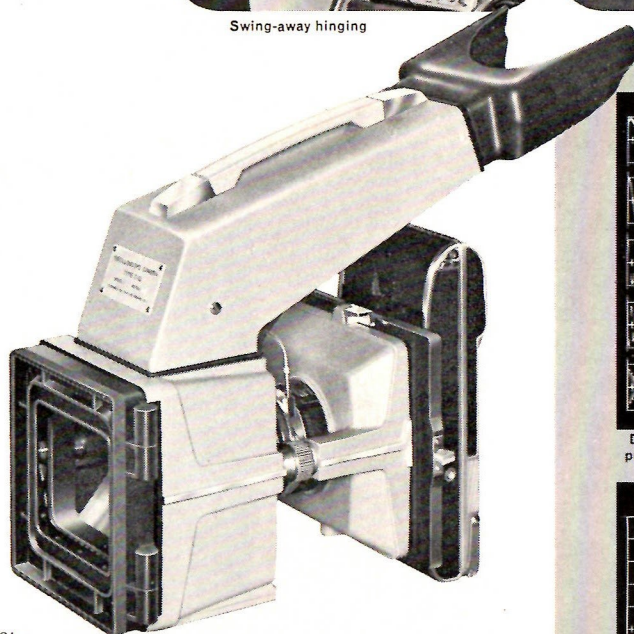
Lift-on mounting



Swing-away hinging



Comfortable viewing—
with or without glasses



THE C-12 CAMERA

combines flexibility with simplicity. It offers you new convenience in undistorted viewing and direct recording of oscilloscope traces.

Here's why:

You can use Polaroid* or any conventional film.

You can use the unique sliding back, adjustable to horizontal or vertical. On this sliding back, you can interchange the par-focal, film-holding backs, lock them securely in 5 detent positions, also rotate them thru 90° increments (with the long axis of the film horizontal or vertical).

You can choose from 8 easily-interchangeable lenses—in varying object-to-image ratios and maximum aperture to f/1.5.

You can focus with one external knob. And, since the lenses are housed in uniform, prefocused, calibrated mounts with keyed threads, you can adjust the shutter speed and diaphragm opening quickly and easily—for these controls always appear at the same accessible position on the camera.

C-12 CAMERA \$500

Includes: f/1.9 Lens (with 1:0.9 object-to-image ratio) complete with cable release, Focusing Back, Polaroid* Back.

C-12-02 CAMERA . . . \$455

Includes: f/1.9 Lens (with 1:0.9 object-to-image ratio) complete with cable release, focusing plate, Polaroid* Back.

U. S. Sales Prices, f.o.b. Beaverton, Oregon

*Registered by Polaroid Corporation

For a demonstration of these and other features of the new C-12 Camera or other Tektronix Trace-Recording Cameras . . . and the many accessories designed for specialized applications . . . please call your Tektronix Field Engineer.

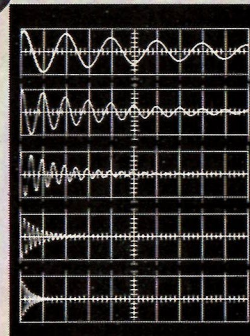
Tektronix, Inc. P. O. BOX 500 • BEAVERTON, OREGON / Mitchell 4-0161 • TWX—BEAV 311 • Cable: TEKTRONIX

TEKTRONIX FIELD OFFICES: Albuquerque, N. Mex. • Atlanta, Ga. • Baltimore (Towson) Md. • Boston (Lexington) Mass. • Buffalo, N.Y. • Chicago (Park Ridge) Ill. • Cleveland, Ohio • Dallas, Texas • Dayton, Ohio • Denver, Colo. • Detroit (Lathrup Village) Mich. • Endicott (Endwell) N.Y. • Greensboro, N.C. • Houston, Texas • Indianapolis, Ind. • Kansas City (Mission) Kan. • Los Angeles, Calif. Area (East Los Angeles Encino • Pasadena • West Los Angeles) • Minneapolis, Minn. • New York City Area (Albertson, L.I., N.Y. • Stamford, Conn. • Union, N.J.) • Orlando, Fla. • Philadelphia, Pa. • Phoenix (Scottsdale) Ariz. • Portland, Ore. • Poughkeepsie, N.Y. • San Diego, Calif. • San Francisco, Calif. Area (Lafayette • Palo Alto) • Seattle, Wash. • Syracuse, N.Y. • Washington, D.C. (Annandale, Va.).

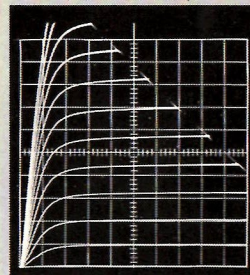
TEKTRONIX CANADA LTD: Montreal, Quebec • Toronto (Willowdale) Ontario.

ENGINEERING REPRESENTATIVES: Kentron Hawaii Ltd., Honolulu, Hawaii. Tektronix is represented in twenty-five overseas countries by qualified engineering organizations.

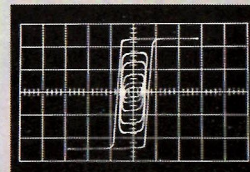
European and African countries, the countries of Lebanon and Turkey, please contact TEKTRONIX INTERNATIONAL A.G., Terrassenweg 1A, Zug, Switzerland, for the name of your local engineering representative. Other Overseas areas, please write or cable directly to Tektronix, Inc., International Marketing Department, P. O. Box 500, Beaverton, Oregon, U.S.A. Cable: TEKTRONIX.



Damped sine wave (multiple exposure using 5 detent positions and internal mask).



Family of characteristic curves (for NPN transistor).



Typical hysteresis loops (multiple exposure of varying amplitudes).