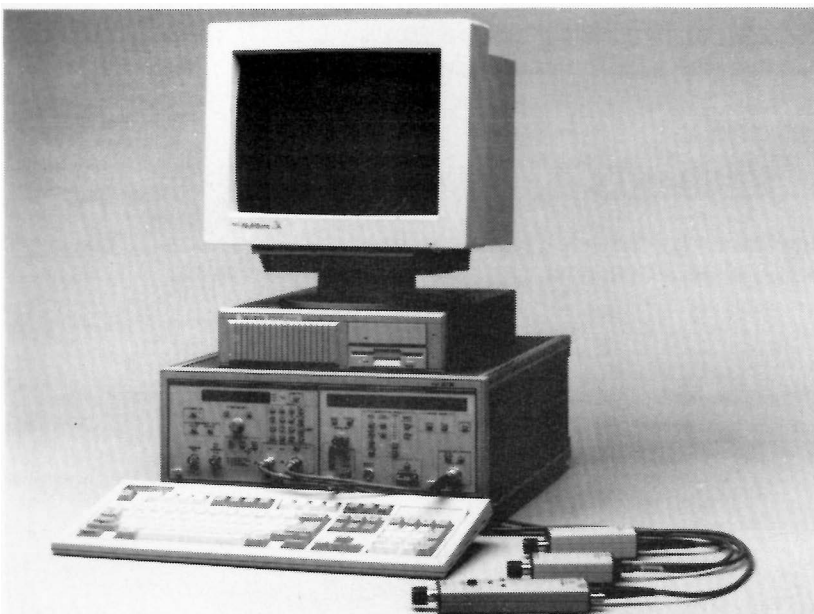


OSCILLOSCOPE CALIBRATION WORKSTATIONS

The **Tektronix Oscilloscope Calibration Workstations**, as procured by the U.S. Army under contract number DAAH01-89-D-0143 is a semi-automatic system designed to calibrate oscilloscopes in the DC to 500 MHz range. The system can be provided in either rack mount - Type I - (F7529A1), or bench top - Type II - (F7529A2) configuration. Individual workstations components may also be ordered separately.



**Rack Mount
Type I
(F7529A1)**



**Bench Top
Type II
(F7529A2)**

OSCILLOSCOPE CALIBRATION WORKSTATIONS

WORKSTATION COMPONENTS

CG5011 Opt 01	Programmable Calibration Generator High Stability Time Base CG5011 includes: Output Cable Assembly (012-0884-00), and Pulse Head (015-0311-01).
SG5030	Programmable Leveled Sinewave Generator includes Output Leveling Head (015-2350-00).
TM5006A Opt 10 (Type I only) Opt 15	Mainframe Rackmount EMC
2402A Opt 1R (Type I only) Opt 21 Opt 31 Opt 34 Opt 39 Opt 45 119-3772-00 119-3798-00	TekMate (Workstation Controller) Rackmount 44 MByte Hard Disk Add Additional GPIB Cards VGA Video Output Math Co-processor RAM Expansion Keyboard VGA Color Monitor
063-0422-00 063-0423-00 063-0424-00	Test Dispatcher Control File Editor Software

ACCESSORIES

The Tektronix Oscilloscope Calibration Workstations are delivered with two sets of Technical Documentation. In addition to the standard accessories supplied with the major components listed above. Each Workstation is complete with interconnecting cables, GPIB Cables, Extenders, and Load Resistors.

WARRANTY

The F7529A1/A2 Oscilloscope Calibration Workstations have a one-year warranty. An additional four (4) years of warranty is available at additional cost.

ORDERING INFORMATION

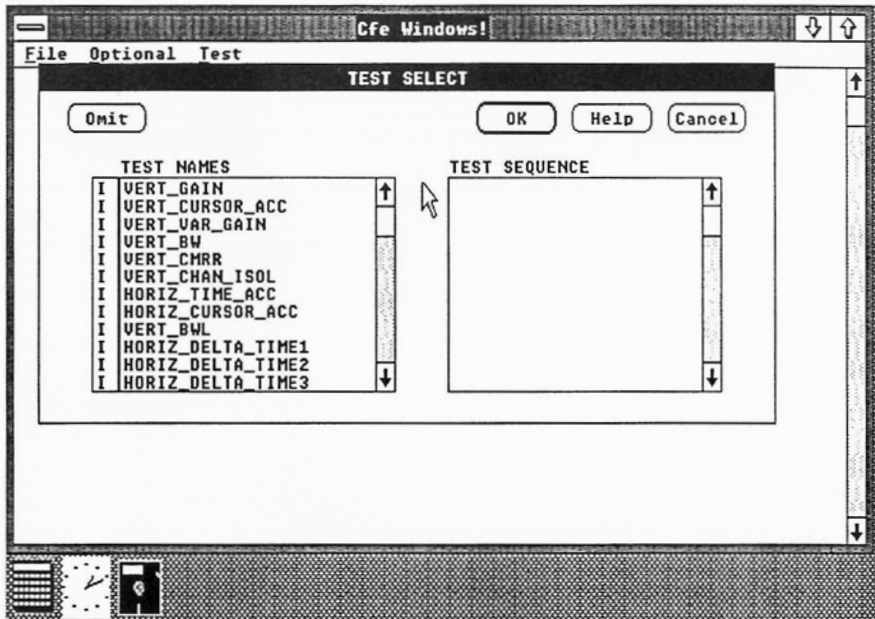
For ordering information, contact the locations on the back page.

OSCILLOSCOPE CALIBRATION WORKSTATIONS

SOFTWARE

Control File Editor (CFE)

The Control File Editor (CFE) is a menu driven software package which operates in a window environment. The CFE is used by the customer to create or modify oscilloscope calibration procedures. The picture to the right is an example of the available windows used during test program



The listing below provides the tests available using the Control File Editor.

Vertical

Gain
Balance
Centering
Input Coupling
Lf Linearity
Mode
Bandwidth
Step Response
Channel Isolation
Input Impedance
Overload Protection
CMRR

Horizontal Tests

Sweep Accuracy
Delay
Magnifier
Sweep Length
Balance
Position
X vs. Y
Gain

Trigger Tests

Sensitivity
Mode
Noise Rejection
Level Accuracy
Hold Off
Trigger View

Power Supply Tests

Voltage
Ripple

Miscellaneous Tests

A&B Gate Output
External Z Axis
Calibrator Output
D/A Converter Reference
Ch2 Vertical Output
CRT Display

USER NAME: TEKTRONIX	STATION : PC	
DUT NAME :	SERIAL # :	
SEQUENCE :	TEST LIST:	
	TEST NAME:	
PLEASE SELECT DEVICE UNDER TEST (DUT)		
1.2430A	8.435	15.5440
2.2465B	9.454	16.7613
3.7904	10.465	17.SC504
4.475	11.485	18.T922
5.323	12.2213	19.HP_1741A
6.422	13.2235	20.HP_1743A_001
7.434	14.2236	21.HP_1067A_001
ENTER SELECTION NUMBER:		
F1	F2	
INTER-	HELP	
RUPT		

Oscilloscope Test Programs

The Oscilloscope Calibration Workstations, F7529A1/A2, is provided with 23 specific oscilloscope calibration procedures. Each procedure provides a complete set of test routines necessary to assure that the given oscilloscope meets published manufacturers specifications. For GPIB oscilloscopes the procedures are fully automated tests requiring little operator intervention. For non-bus controllable oscilloscopes, the system is set up and the operator is prompted to provide the feedback and settings for the scope being tested. All tests are traceable to NIST. The picture to the left is an example of the start-up menu listing the specific oscilloscope test programs provided with the system.

FEDERAL SYSTEMS DIVISION
FEDERAL LOGISTICS AND MAINTENANCE GROUP

P.O. Box 46
Beaverton, OR 97076-4600
Tel (503) 629-3251 or (512) 432-1341
Fax (503) 629-5388 or (512) 432-1859

AIR FORCE ACCOUNT MANAGER

1831 South General McMullen Dr.
Suite 101
San Antonio, TX 78226
Tel (512) 432-1341
Fax (512) 432-1859

NAVY/USMC ACCOUNT MANAGER

Rosslyn Center
1700 N. Moore St., Suite 1620
Arlington, VA 22209
Tel (703) 522-4500
Fax (703) 525-7802

USAF ACCOUNT SPECIALIST

501 Progress Rd.
Dayton, OH 45449
Tel (513) 859-3681
Fax (513) 866-2093

NAVY ACCOUNT SPECIALIST

Rosslyn Center
1700 N. Moore St., Suite 1620
Arlington, VA 22209
Tel (703) 522-4500
Fax (703) 525-7802

USAF ACCOUNT SPECIALIST

P.O. Box 6500
Norcross, GA 30091
Tel (404) 449-4770
Fax (404) 449-0358

NAVY ACCOUNT SPECIALIST

17052 Jamboree Blvd.
Irvine, CA 92714
Tel (714) 660-8080
Fax (714) 474-1490

USAF LOGISTICS SPECIALIST

1831 South General McMullen Dr.
Suite 101
San Antonio, TX 78226
Tel (512) 432-1341
Fax (512) 432-1859

SECURITY ACCOUNT MANAGER

700 Professional Dr.
P.O. Box 6026
Gaithersburg, MD 20850
Tel (301) 948-7151
Fax (301) 921-0461

ARMY ACCOUNT MANAGER

40 Gill Lane
Woodbridge, NJ 07095
Tel (201) 636-8616
Fax (201) 636-7234

SECURITY ACCOUNT SPECIALIST

700 Professional Dr.
P.O. Box 6026
Gaithersburg, MD 20850
Tel (301) 948-7151
Fax (301) 921-0461

39 Avenue Of The Commons
Shrewsbury, NJ 07702
Tel (201) 542-1035
Fax (201) 542-1466

ATE PROGRAM DEVELOPMENT MANAGER

5770 Ruffin Rd
San Diego, CA 92129
Tel (619) 292-1287
Fax (619) 292-7864

ARMY ACCOUNT SPECIALIST

4900 Corporate Dr
Suite H
Huntsville, AL 35805
Tel (205) 830-9212
Fax (205) 837-2666

INTERNATIONAL SALES MANAGER

2950 Gateway Centre Blvd
Morrisville, NC 27560
Tel (919) 481-3800
Fax (919) 469-8823